

MURSIX CORPORATION

Aftermarket Components

PRODUCT CATALOG

Water Pump Impellers & Plates

Advanced Components. Unique Collaboration.



Aftermarket Impeller Catalog Cross Reference

Part Number	OEM	Description	Fits / Notes	Img Pg
P-780-2	Acura/Honda/Isuzu	L4-2.2L / L4-2.3L	Acura CL 1997 L4-2.2L; Acura CL 1998-99 L4-2.3L; Honda Accord 1998-02 L4-2.3L; Honda Accord 1990-97 L4-2.2L; Honda Odessey 1998 L4-2.3L; Honda Odessey 1995-97 L4-2.2L; Honda Prelude 1992-96 L4-2.2L; Isuzu Oasis 1996-97 L4-2.2L; Isuzu Oasis 1998-99 L4-2.3L	7
P-781-2	Acura/Honda	V6-3.2L / V6-3.0L / V6-3.5L	Acura CL 2001-03 V6-3.2L; Acura 1997-99 V6-3.0L; Acura MDX 2001-02 V6-3.5L; Acura TL 1999-03 V6-3.2L; Honda Accord 1998-02 V6-3.0L; Honda Odyssey 1999-04 V6-3.5L; Honda Pilot 2003-04 V6-3.5L	8
P-782-2	Toyota	L4-2.2L / L4-2.0L	Toyota Camry 1992-01 L4-2.2L; Toyota Camry 1987-91 L4-2.0L; Toyota Celica 1987-89 L4-2.0L; Toyota Celica 1990-99 L4-2.2L; Toyota MR2 1991-95 L4-2.2L; Toyota Rav4 1996-00 L4-2.0L; Toyota Solara 1999-01 L4-2.2L	9
P-783-2	GM	4.3L V6 LV3; 5.3L V8 L83 L84; 6.2L V8 L86 L87	Silverado; Sierra; Tahoe; Escalade; Yukon; LT4-A2 CT5 Blackwing; LT4-T1 Escalade V; LT2 Corvette	10
P-784-2	GM	4.3L V6LV3; 5.3L V8 L83 L84; 6.2L V8 L86 L87; 6.6L V8 L8T	Silverado; Sierra; Tahoe; Yukon; Escalade; Camaro SS ZL1; Corvette C7 LT1 LT4; Express; Savana	11
P-785-2	GM	2014 Gen V LT1; 5.3L L83; 6.2L L86; 4.3L LV3	2014-2018 Silverado Sierra; Tahoe; Suburban; Yukon; Yukon XL; Escalade; Corvette; C7 LT1LT4; Camaro SS LT1	12
P-463-2	Chrysler	5/8 Bore	3.2L, 3.7L 1960-80; 4.2L, 5.2L, 5.6L 65-69	13
P-615-2	Chrysler	All A. C models	V-8 5.2L, 5.6L; 5.9L, 6.3L, 6.8L; 7.0L, 7.2L; between 59-80	14
P-616-2	Chrysler	5/8 Bore	V-8 6.6L, 7.2L; 1975-1980 Box	15
P-623-2	Chrysler	5/8 Bore	V-8 5.2L, 5.9L; 6.3L, 6.8L; 7.0L, 7.2 Qty; 3000; All models; without A.C	16
P-694-2	Chrysler	5/8 Bore	4 cyl. 2.6L; 1981-1987 Plymouth; Dodge	17
P-706-20	Chrysler	Back Plate	6 Cyl. 2.8L, 3.2L, 3.7L; Dodge 60-83; Dodge Truck 61-87; Plymouth 60-83	18
P-709-2	Chrysler	12 MM Bore	4 Cyl. 2.0L, 2.4L; 1983-1993; 1983-1996 Dodge Ram; Power; Ram; Mitsubishi Truck	19
P-710-2	Chrysler	12 MM bore	4 Cyl. 2.0L, 2.4L; 1976-1985 Mitsubishi Engines	20
P-712-2	Chrysler	12 MM Bore	4 Cyl. 1.4L, 1.5L, 1.6L; 1979-1989 Engines; Mistubishi	21
P-716-2	Chrysler	5/8 Bore	4 Cyl; 2.2 L, 2.5L 1989	22
P-718-2	Chrysler	12 MM Bore	4 Cyl; 2.2L 2.5L; 1990-1995 Chrysler; Dodge; Plymouth	23
P-723-2	Chrysler	12 MM Bore	4 Cyl. 2.6L; Chrysler 82-85; Dodge 81-85; Dodge trk. 84-87; Plymouth 81-85; Ply. Truck 84-87	24
P-727-2	Chrysler	5/8 Bore	V-6 3.3L, 3.8L; Chrysler 90-02; Dodge 90-02; Ply. Truck 90-02 Dodge Truck	25

Click any matrix row to jump to the matching image page.

Aftermarket Impeller Catalog Cross Reference

Part Number	OEM	Description	Fits / Notes	Img Pg
P-728-2	Chrysler	12 MMBore	4 Cyl. 2.4L; Pt Cruiser 01-04; 96-04; 95-04; Jeep 02-04; 96-02; 5 97-04 Sebring; Stratus; Breeze; MiniVans	26
P-730-2R	Chrysler	American Motors	4 cyl. 2.5L; 6 cyl. 4.2L	27
P-731-2	Chrysler	5/8 Bore	4 Cyl. 2.5L; 6 Cyl. 4.2L; 80-86 models American Motors; without serp. belt	28
P-750-2	Chrysler	12 MM bore	V-6 3.3L; V-6-3.8L	29
P-761-2	Chrysler	12 MM Bore	ApX.-1991-04 Pickup; Ram; Grand Cherokee; Liberty; Dakota, Durango	30
P-777-2P	Chrysler	12 MM Bore	Dodge 87-2000; 1988-1999 Hyundai, Mits	31
P-778-2P	Chrysler	12 MM Bore	2.5L; Montoro 3.5l; Mist. Eclipse2.5, 3.0L; Apx.1995-2001 Avenger; Mits. Galant	32
P-720-2	Diesel	5/8 Bore	V-8 8.2L; 1960-1970 General Motors	33
P-732-2	Diesel	5/8 Bore	V-8 6.6L; 6.9L, 7.3L; Ford Truck 83-94; Navistar 75-91 P-739-2; Ford Truck	34
P-739-2	Diesel	5/8 Bore	turbo diesel 1994 Ford, Navistar; Ford Truck with; Navistar with direct	35
P-742-2DP	Diesel	5/8 Bore	4 Cyl. 3.9L; 6 Cyl. 5.9L Cummins; s B series; Various	36
P-743-2DP	Diesel	5/8 Bore	6 Cyl. 8.3L P-743-2P; Box; Various C-series	37
P-751-2P	Diesel	5/8 Bore	6 cyl; 6.7L, 7.6L, 8.6L; Trucks 95-96 Navistar	38
P-491-1	Ford	5/8bore	8 Cyl. 6.4L, 7.0L; 1968-1970 P-491-2	39
P-534-2	Ford	5/8 Bore	V-8 4.7l, 5.0L, 5.8l; Mercury 1965-1969 Ford1965-1974	40
P-537-2	Ford	Impellar	8 Cyl. 7.0L, 7.5L; Ford 1968-1980; Mercury 1968-1978; Lincoln 1968-1978	41
P-548-2	Ford	5/8bore	V-8 4.2L, 5.0L; 5.8L, 6.6l; Ford 1970-1980; Lincoln 1973-1980; Mercury 1970-1980	42
P-619-2	Ford	5/8 Bore	4 Cyl. 2.3l; 6 Cyl. 3.3L; 1974-1980 Ford Mercury	43
P-636-2	Ford	5/8 Bore	6 Cyl. 4.1 L; 1970-1980 Ford, Mercury	44
P-639-2	Ford	5/8 Bore	6 Cyl. 4.0L., 4.9L; 1965-1980 Ford Truck	45
P-639-2P	Ford	5/8 Bore	6 Cyl. 4.0, 4.9L; Truck 65-80 Shield on back	46
P-644-2	Ford	5/8 Bore	V-8-5.4L, 5.8L; 5.9L, 6.4L, 7.0l; 1958-1976 Ford, Mercury	47
P-688-2P	Ford	5/8 Bore	V-8-4.2L; 5.0L, 5.8l; 1979-1981 FordLincoln; Mercury	48
P-695-2P	Ford	5/8 Bore	4 Cyl.-1.6l, 1.9l; Escort 81-90; Lynx-1981-1987	49
P-698-2P	Ford	12 MM. Bore	4 Cyl. 1.9L; 1981-1987 Escort; Mercury Lynx	50
P-699-2	Ford	5/8 Bore	4 Cyl. 2.3L; 1984-1991 Ford Tempo; Mercury; Topaz	51

Click any matrix row to jump to the matching image page.

Aftermarket Impeller Catalog Cross Reference

Part Number	OEM	Description	Fits / Notes	Img Pg
P-700-2	Ford	5/8 Bore	V-6 3.0L; 1986-1994 Ford Taurus; Mercury Sable	52
P-701-2	Ford	5/8 Bore	V-6-3.8L; 1988-1993 Taurus-T-bird; Lincoln Continental; Mercury Sable; Mercury Cougar	53
P-702-20	Ford	Mustang	V-8 5.0L; 1986-1993 T-bird; Cougar, Capri; Lincoln	54
P-703-20	Ford	Truck	V-8 5.0L; 1987-1997 EF-150/350	55
P-704-20	Ford	Plate	V-8 4.2L, 5.0L, 5.8L; Mercury 79-81 Ford, Lincoln	56
P-705-20	Ford	Plate	V-8 4.2L, 5.0L, 5.8L; 1979-1991 Ford, Mercury	57
P-707-2	Ford	5/8 Bore	V-8 5.0L; 1986-1988 Ford Truck; Merc. Cougar; Merc. Capri	58
P-708-20	Ford	Back Plate	V-8-4.7L, 5.0L, 5.8L; Ford 1965-1974; Mercury 1965-74	59
P-711-2	Ford	5/8 Bore	4.2L, 5.0L, 5.8L; 1979-1991 Ford, Mercury	60
P-721-20	Ford	V-8, 4.2, 5.0	5.8L, 6.6L; 1970-1984 12 Mounting; Holes	61
P-721-20A	Ford	V-8	4.2L, 5.0L; 5.8L, 6.6L; 1970-1980 13 Hole	62
P-724-20	Ford	Back Plate	4 cyl. 1.9L; Escort 1991-96; Merc. Tracer 91-96	63
P-726-2P	Ford	5/8 Bore	V-8 5.0L; T-bird 1991-1993; XR7-91-93 Cougar	64
P-729-2	Ford	12 MM Bore	4 Cyl. 1.8L, 2.0L; Ford Probe 93-97; Mazda 626 93-02; Mazda Mx-6 93-97; Mazda Protege 99-03	65
P-732-2	Ford	5/8 Bore	V-8 6.6L; 6.9L, 7.3L; Ford Truck 83-94; Navistar 75-91 P-739-2	66
P-734-2	Ford	!2 MM Bore	6 cyl. 3.0L; 95-04; 95-04 Taurus; Winstar	67
P-735-2	Ford	12 MM Bore	V-6 3.8L; 94-95; Merc. Sable 94-95 Winstar 95; Taurus; Continental 94	68
P-737-2	Ford	12 MM Bore	94-95; Merc. Sable 94-95 95; Winstar; Taurus; Continental 94	69
P-739-2	Ford	5/8 Bore	turbo Diesel 96-02; turbo diesel 1994 Ford Truck with; Navistar with direct	70
P-740-2P	Ford	5/8 Bore	4 Cyl. 2.3L, 2.5L; 95-02; Mazda B2300 95-97 Ranger	71
P-741-2	Ford	5/8 Bore	8 cyl. 4.6L; 1991-1997	72
P-745-20	Ford	Box (V-8 5.5L, 5.8L; 6.4L, 6.7L, 7.0L; Ford 1958-1968; Mercury-1961-1968; Edsel 1958-1960	73
P-752-2	Ford	12 MM Bore	V-6 3.8L; Mustang 96-04; Cougar 96-97; T-bird 96-97; Windstar 96-02	74
P-754-2	Ford	5/8 Bore	6 cyl; 2.4L, 2.8L, 3.3L; Falcon 60-68; Bronco 66-74; Maverick 70-73; Ford Truck 61-70; Comet 60-75	75
P-760-2	Ford	Bore	V-8 4.6L, 5.4L; 1997-2000 12 MM; Expedition; Navigator	76
P-762-2	Ford	12MM Bore	V-8 4.6L, 5.4L; Excursion 2000-2002; Expedition 97-02; Navigator 01-02 E-100-35097-02; F100-35099-02	77

Click any matrix row to jump to the matching image page.

Aftermarket Impeller Catalog Cross Reference

Part Number	OEM	Description	Fits / Notes	Img Pg
P-763-20	Ford	Navistar	V-87.3L; 1997-2003	78
P-764-2	Ford	12 MM Bore	V-8 4.6L; Lincoln, 93-02 Ford, Mercury	79
P-768-20	Ford	Back Plate	4 Cyl. 2.0L; Escort 97-02; Tracer 97-99	80
P-774-2P	Ford	12 MM Bore	Mustang 2001-2004; Lincoln 1991-2004; Merc. Marquis 01-04	81
P-776-20	Ford	Raceway Plate		82
34131	GM	5/8 Bore	8.1L; 2001-2010 34131; O.E. Source	83
P-132-B-20	GM	Motors	V-6 3.3L, 3.8L; 4.3L up to 7.4 L General; 1955 and up; V-8 engines	84
P-132-B20SS	GM	General Motors	1955 and up; Stainless steel	85
P-426-2	GM	General Motors	V-8 4.3L, 5.4 L; V-8 5.4L, 5.7L; V-8 6.6L; Apx. 1965-1980 Olds.Pontiac	86
P-482-2	GM	Qty	V-6-3.3L, 3.8; V-8-4.31, 4.41, 4.7L; 5.4L, 5.7L, 6.6L, 7.4L 2500; Motors; General; 1955 and up	87
P-482-2A	GM	GeneralMotors	V-6-3, 3L-3.8l; V-8-4.3L, 4.4L, 4.71; 5.0L, 5.4L, 5.7l; 6.6L, 7.4l 1955 and up; Sam as P-482-2; without insert	88
P-666-2	GM	5/8 Bore	V-8 4.3L; 5.7L., 6.6l; Gas or diesel; 1970-1980 General Motors; models with A.C	89
P-713-2P	GM	13 MM. Bore	3.0, 3.3, 3.8L V-6; Buick, Olds; Pontiac	90
P-714-2	GM	5/8 Bore	V-8 5.7L; 1984-1991 General Motors; Corvette	91
P-715-2	GM	5/8 Bore	V-6 4.3L; V-8 5.0L; 1987-2004 General Motors	92
P-717-2G	GM	General Motors	4 Cyl. 1.6 L; 1988-1990 Pontial Lemans	93
P-719-2W	GM	General Motors	4 Cyl. 2.5L; 1980-1986 Buick, Chevrolet,; Olds Pontiac models; Using; bolt; universal; on pulley with; press; on hub	94
P-720-2	GM	5/8 Bore	V-8 8.2L; 8.2L Diesel; 1960-1970 General Motors	95
P-722-2	GM	15 MM Bore	4 Cyl; 1.8L, 2.0L; Buick Skyhawk 82-86; 82-86; Pontiac J2000 82-94 Olds Firenza; Pontiac Lemans; 51990	96
P-725-2P	GM	5/8 Bore	4 Cyl. 2.0L, 2.2L; Buick 1987-1996; Chevrolet 87-96; Cavalier 92-2002; S-10 1994-2003; 94-03 Gmc Sonoma	97
P-733-2P	GM	12 MM Bore	V-6 3.0L, 3.3L, 3.8L; Pontiac 85-2000; 1992-1995 General Motors; Buick Olds,; Chevy; Lumina	98
P-744-2	GM	5/8 Bore	8 Cyl. 6.0L; 7.0L, 7.4L; 1976-1990 General Motors	99
P-746-2	GM	5/8 Bore	V-8 7.4L; 1988-2000 General Motors	100
P-748-2	GM	12 MM Bore	4 Cyl 2.4L; 1996-2002 General Motors; Quad Four; Buick Chevy; Olds, Pontiac	101

Click any matrix row to jump to the matching image page.

Aftermarket Impeller Catalog Cross Reference

Part Number	OEM	Description	Fits / Notes	Img Pg
P-755-2	GM	5/8 Bore	4 Cyl. 2.5L; 6 Cyl. 3.8L, 4.1L General Motors; Amc with Gm. 151eng	102
P-756-20	GM	General Motors	8 Cyl. eng; 6.5L, 6.6L, 7.0L, 7.4L; 1967-1985; 2000-2009 Chevy	103
P-756-20SS	GM	General Motors	8 Cyl. engines Same as P-756-20; Steel; Stainless	104
P-757-2DP	GM	5/8 Bore	V-8 4.1L; 1982-1985 GeneralMotors; Plate on both sides	105
P-758-2DP	GM	5/8 Bore	4 Cyl. 1.9L; Saturn 91-2000 General Motors; Plate on both sides	106
P-759-2P	GM	5/8Bore	4 Cyl. 1.9L; 1991-1997 General Motors; Saturn; Top Plate only	107
P-766-2	GM	General Motors	V-8 4.6L; Cadillac 95-04; Olds.Aurora 95-04 Pontiac-2004	108
P-767-2	GM	Bore	8 Cyl. 350-5.7L; 1992-1997 Motors; Genera; 10MM; Camaro; Corvette; Cadillac; Buick Roadmaster	109
P-769-2DP	GM	5/8Bore	4.8L, 5.3L, 5/7L, 6.0L; Escalade 02-03; Corvette 97-03; Avalanche-02-03; Silverado-93-03; Siera 99-03; Yukon-00-03 General Motors; Camaro98-02; Suburban; Denali	110
P-773-2G	GM	General Motors	1982-1994 Belt Guard; Skylark, Firenza; Camaro Firebird; Lemans	111
P-697-20	Nissan-Isuzu	Thermo-King	4 Cyl. engine Isuzu engine	112
P-747-2	Nissan-Isuzu	5/8 Bore	2-5/16 O.D; Vane; Ht. 31/64	113
P-770-2	Nissan-Isuzu	12 MM Bore	4 cyl. 1.6L; Sentra 91-2000; 200 SX-95-98 Nissan	114
P-771-2	Nissan-Isuzu	12 MM Bore	4 Cyl. 2.4i; 240SX 89-91; Frontier 98-04; 2000-2004 Nissan; Xterra	115
P-772-2	Nissan-Isuzu	12 MM Bore	1.51, 1.6L; 1982-1989 Nissan/Datsun	116

Click any matrix row to jump to the matching image page.

P-780-2 | Acura/Honda/Isuzu

[Back to Matrix](#)

L4-2.2L / L4-2.3L | Acura CL 1997 L4-2.2L; Acura CL 1998-99 L4-2.3L; Honda Accord 1998-02 L4-2.3L; Honda Accord 1990-97 L4-2.2L; Honda Odessey 1998 L4-2.3L; Honda Odessey 1995-97 L

Aul Bros #P-780-2



Acura	CL	1997	L4-2.2L Engine
Acura	CL	1998-99	L4-2.3L Engine

Honda	Accord	1998-02	L4-2.3L Engine
Honda	Accord	1990-97	L4-2.2L Engine
Honda	Odessey	1998	L4-2.3L Engine
Honda	Odessey	1995-97	L4-2.2L Engine
Honda	Prelude	1992-96	L4-2.2L Engine

Isuzu	Oasis	1996-97	L4-2.2L Engine
Isuzu	Oasis	1998-99	L4-2.3L Engine

P-781-2 | Acura/Honda

[Back to Matrix](#)

V6-3.2L / V6-3.0L / V6-3.5L | Acura CL 2001-03 V6-3.2L; Acura 1997-99 V6-3.0L; Acura MDX 2001-02 V6-3.5L; Acura TL 1999-03 V6-3.2L; Honda Accord 1998-02 V6-3.0L; Honda Odyssey 1999

Aul Bros # P-781-2



Acura	CL	2001-03	V6-3.2L Engine
Acura	CL	1997-99	V6-3.0L Engine
Acura	MDX	2001-02	V6-3.5L Engine
Acura	TL	1999-03	V6-3.2L Engine

Honda	Accord	1998-02	V6-3.0L Engine
Honda	Odyssey	1999-04	V6-3.5L Engine
Honda	Pilot	2003-04	V6-3.5L Engine

P-782-2 | Toyota

[Back to Matrix](#)

L4-2.2L / L4-2.0L | Toyota Camry 1992-01 L4-2.2L; Toyota Camry 1987-91 L4-2.0L; Toyota Celica 1987-89 L4-2.0L; Toyota Celica 1990-99 L4-2.2L; Toyota MR2 1991-95 L4-2.2L; Toyota Rav

Aul Bros #P-782-2



Toyota	Camry	1992-01	L4-2.2L Engine
Toyota	Camry	1987-91	L4-2.0L Engine
Toyota	Celica	1987-89	L4-2.0L Engine
Toyota	Celica	1990-99	L4-2.2L Engine
Toyota	MR2	1991-95	L4-2.2L Engine
Toyota	Rav4	1996-00	L4-2.0L Engine
Toyota	Solara	1999-01	L4-2.2L Engine



P-783-2

4.3L V6 LV3
5.3L V8 L83 L84
6.2L V8 L86 L87
Silverado
Sierra
Tahoe
Escalade
Yukon
LT4-A2 CT5 Blackwing
LT4-T1 Escalade V
LT2 Corvette

P-784-2 | GM

[Back to Matrix](#)

4.3L V6LV3; 5.3L V8 L83 L84; 6.2L V8 L86 L87; 6.6L V8 L8T | Silverado; Sierra; Tahoe; Yukon; Escalade; Camaro SS ZL1; Corvette C7 LT1 LT4; Express; Savana

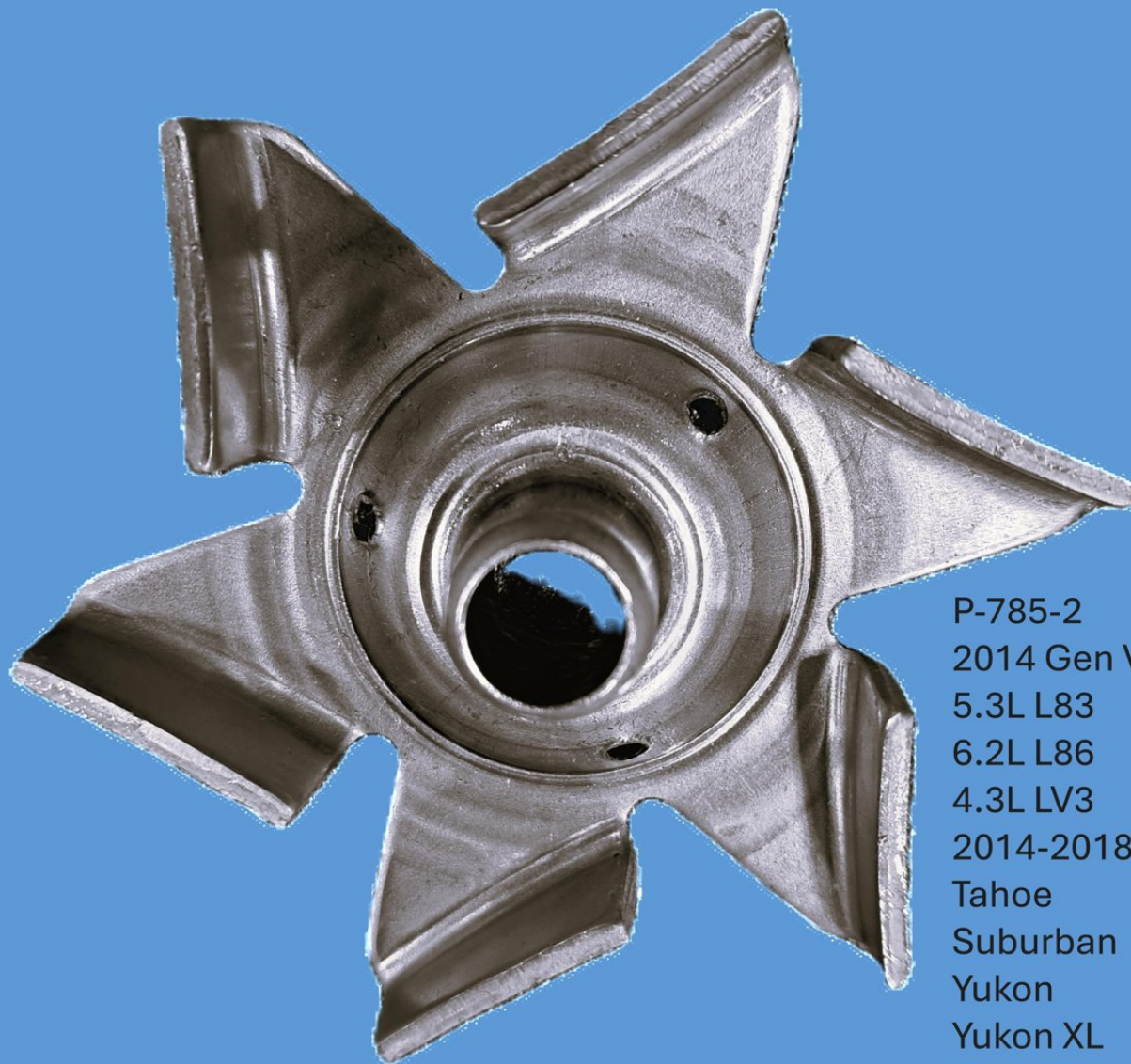


P-784-2
4.3L V6 LV3
5.3L V8 L83 L84
6.2L V8 L86 L87
6.6L V8 L8T
Silverado
Sierra
Tahoe
Yukon
Escalade
Camaro SS ZL1
Corvette C7 LT1 LT4
Express
Savana

P-785-2 | GM

2014 Gen V LT1; 5.3L L83; 6.2L L86; 4.3L LV3 | 2014-2018 Silverado Sierra; Tahoe; Suburban; Yukon; Yukon XL; Escalade; Corvette; C7 LT1LT4; Camaro SS LT1

[Back to Matrix](#)



P-785-2
2014 Gen V LT1
5.3L L83
6.2L L86
4.3L LV3
2014-2018 Silverado Sierra
Tahoe
Suburban
Yukon
Yukon XL
Escalade
Corvette C7 LT1 LT4
Camaro SS LT1

P-463-2 | Chrysler

5/8 Bore | Box Qty 4000 | 3.2L, 3.7L 1960-80; 4.2L, 5.2L, 5.6L 65-69

[Back to Matrix](#)



P-463-2
5/8 Bore
Box Qty.-4000
Chrysler
3.2L,3.7L 1960-80
4.2L,5.2L,5.6L 65-69

P-615-2 | Chrysler

All A. C models | Box Qty 3000 | V-8 5.2L,5.6l; 5.9L, 6.3L, 6.8L; 7.0L, 7.2l; between 59-80

[Back to Matrix](#)

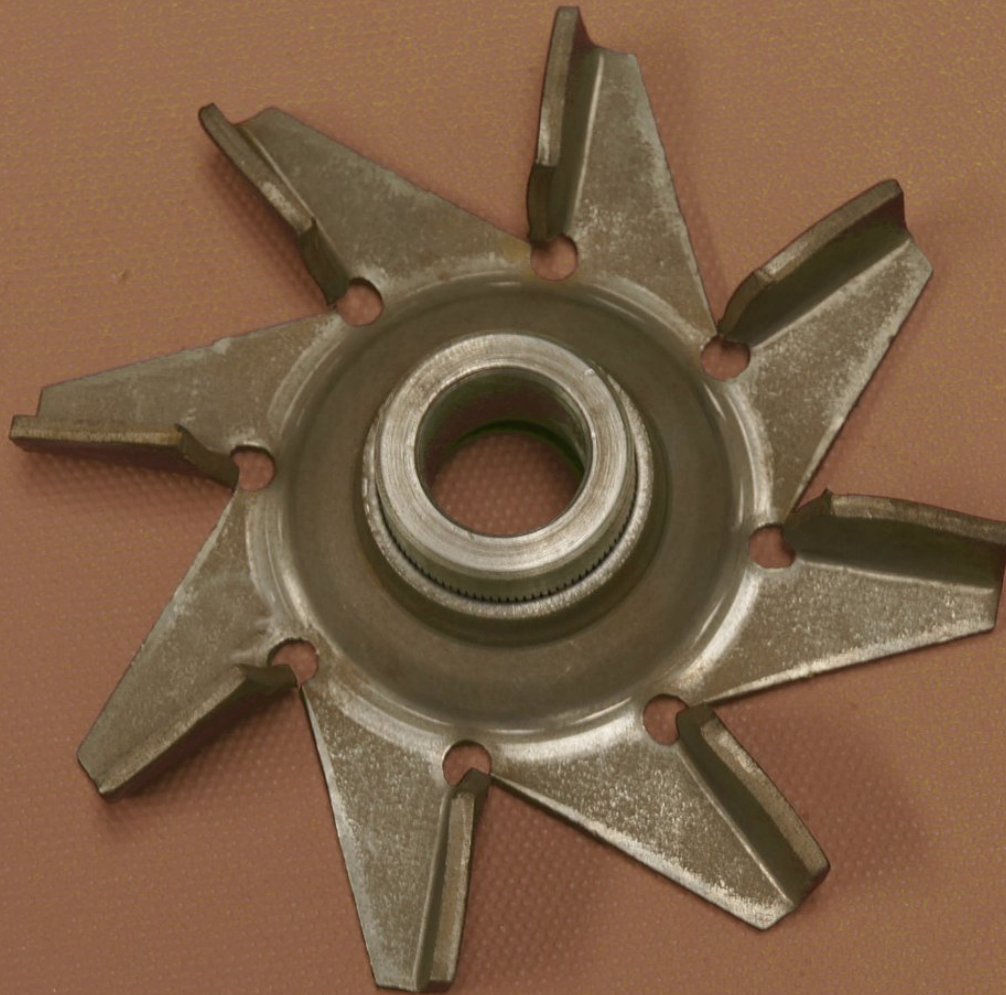


P-615-2
Qty-3000
Chrysler
V-8 5.2L,5.6l
5.9L,6.3L,6.8L
7.0L,7.2L
All A. C models
between 59-80

P-616-2 | Chrysler

5/8 Bore | Box Qty 3000 | V-8 6.6L, 7.2L; 1975-1980

[Back to Matrix](#)



P-616-2
5/8 Bore
Box. Qty. 3000
Chrysler
V-8 6.6L,7.2L
1975-1980

P-623-2 | Chrysler

5/8 Bore | Box Qty 3000 | V-8 5.2L, 5.9L; 6.3L, 6.8L; 7.0L, 7.2

[Back to Matrix](#)



P-623-2
5/8 Bore
Qty 3000
Chrysler
V-8 5.2L,5.9L
6.3L,6.8L
7.0L,7.2L
All models
without A.C.

P-694-2 | Chrysler

5/8 Bore | Box Qty 2500 | 4 cyl. 2.6l; 1981-1987

[Back to Matrix](#)



P-694-2
5/8 Bore
Qty. -2500
Chrysler
Plymouth
Dodge
4 cyl. 2.6L.
1981-1987

P-706-20 | Chrysler

6 Cyl. 2.8L, 3.2L, 3.7L; Dodge 60-83; Dodge Truck 61-87; Plymouth 60-83

[Back to Matrix](#)



P-706-20
6 Cyl. 2.8L,3.2L,3.7L
Chrysler 79-83
Dodge 60-83
Dodge Truck 61-87
Plymouth 60-83

P-709-2 | Chrysler

12 MM Bore | Box Qty 4000 | 4 Cyl. 2.0L, 2.4L; 1983-1993; 1983-1996

[Back to Matrix](#)



P-709-2
Qty. -4000
12 MM Bore
Chrysler
4 Cyl. 2.0L,2.4L
Dodge Ram
Power Ram
1983-1993
Mitsubishi Truck
1983-1996

P-710-2 | Chrysler

12 MM bore | Box Qty 2500 | 4 Cyl. 2.0L, 2.4L; 1976-1985

[Back to Matrix](#)



P-710-2
12 MM bore
4 Cyl. 2.0L,2.4L
Mitsubishi Engines
1976-1985
Box Qty. 2500

P-712-2 | Chrysler

12 MM Bore | Box Qty 2000 | 4 Cyl. 1.4L, 1.5L, 1.6L; 1979-1989

[Back to Matrix](#)



P-712-2
12 MM Bore
Qty. -2000
Chrysler
4 Cyl. 1.4L,1.5L,1.6L
Mistubishi Engines
1979-1989

P-716-2 | Chrysler

5/8 Bore | Box Qty 2500 | 4 Cyl; 2.2 L, 2.5L

[Back to Matrix](#)



P-716-2
5/8 Bore
Qty. 2500
Chrysler
4 Cyl.
2.2 L, 2.5L
1989

P-718-2 | Chrysler

12 MM Bore | Box Qty 2500 | 4 Cyl; 2.2L 2.5L; 1990-1995

[Back to Matrix](#)



P-718-2
Qty.-2500
12 MM Bore
4 Cyl.
2.2L , 2.5L
Chrysler
Dodge
Plymouth
1990-1995

P-723-2 | Chrysler

12 MM Bore | 4 Cyl. 2.6L; Chrysler 82-85; Dodge 81-85; Dodge trk. 84-87; Plymouth 81-85; Ply. Truck 84-87

[Back to Matrix](#)



P-723-2
12 MM Bore
Chrysler
4 Cyl. 2.6L
Chrysler 82-85
Dodge 81-85
Dodge trk. 84-87
Plymouth 81-85
Ply. Truck 84-87

P-727-2 | Chrysler

5/8 Bore | Box Qty 4000 | V-6 3.3L, 3.8L; Chrysler 90-02; Dodge 90-02; Ply. Truck 90-02

[Back to Matrix](#)



P-727-2
5/8 Bore
Box Qty. 4000
Chrysler
V-6 3.3L,3.8L
Chrysler 90-02
Dodge 90-02
Dodge Truck
Ply. Truck 90-02

P-728-2 | Chrysler

12 MMBore | Box Qty 5000 | 4 Cyl. 2.4L; Pt Cruiser 01-04; 96-04; 95-04; Jeep 02-04; 96-02; 5 97-04

[Back to Matrix](#)



P-728-2
12 MM Bore
Box Qty. 5000
Chrysler
4 Cyl. 2.4L
Pt Cruiser 01-04
Sebring 96-04
Stratus 95-04
Jeep 02-04
Breeze 96-02
Mini Vans 97-04

P-730-2R | Chrysler

American Motors | Box Qty 4000 | 4 cyl. 2.5L; 6 cyl. 4.2L

[Back to Matrix](#)

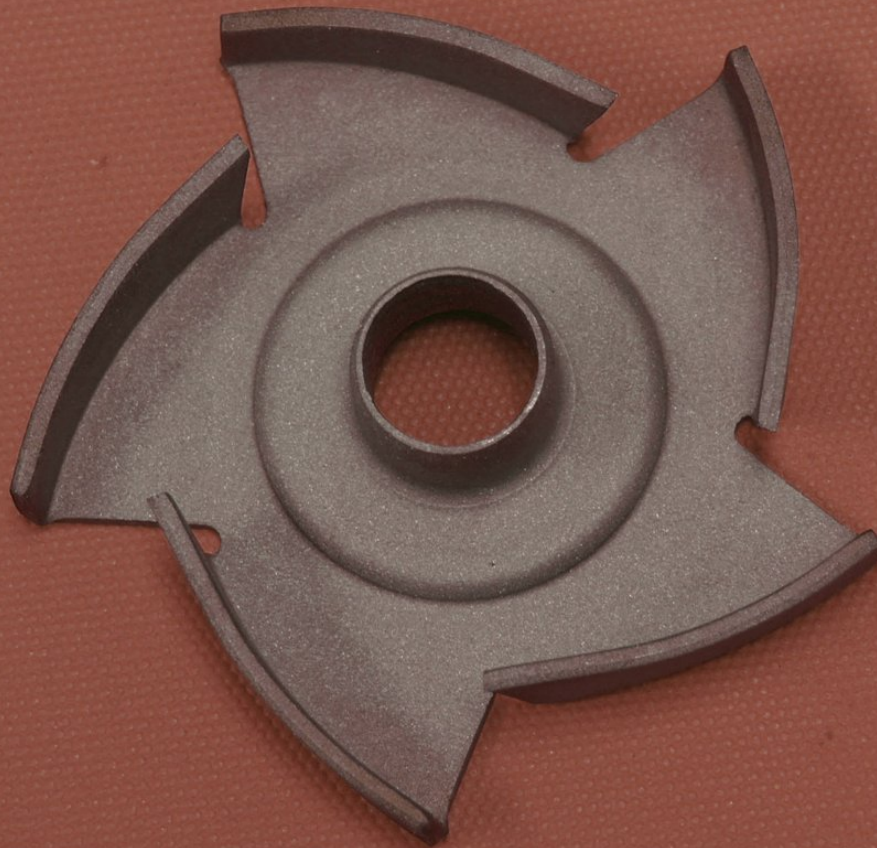


P-730-2R
Box qty. 4000
American Motors
4 cyl. 2.5L
6 cyl. 4.2L

P-731-2 | Chrysler

5/8 Bore | Box Qty 2000 | 4 Cyl. 2.5L; 6 Cyl. 4.2L; 80-86 models

[Back to Matrix](#)



P-731-2
5/8 Bore
Box Qty.-2000
American Motors
4 Cyl. 2.5L
6 Cyl. 4.2L
80-86 models
without serp. belt

P-750-2 | Chrysler

12 MM bore | Box Qty 4000 | V-6 3.3L; V-6-3.8L

[Back to Matrix](#)



P-750-2
Box qty 4000
12 MM bore
V-6 3.3L
V-6-3.8L
Chrysler 90-2002

P-761-2 | Chrysler

12 MM Bore | Box Qty 4000 | ApX.-1991-04

[Back to Matrix](#)



P-761-2
12 MM Bore
Box Qty. 4000
Chrysler
Ram Pickup
Grand Cherokee
Liberty
Dakota, Durango
ApX.-1991-04

P-777-2P | Chrysler

12 MM Bore | Box Qty 4000 | Dodge 87-2000; 1988-1999

[Back to Matrix](#)



P-777-2P
12 MM Bore
Box Qty.-4000
Chrysler 3.0L.
Dodge 87-2000
Hyundai,Mits.
1988-1999

P-778-2P | Chrysler

12 MM Bore | Box Qty 4000 | 2.5L; Montoro 3.5l; Mist. Eclipse2.5, 3.0L; Apx.1995-2001

[Back to Matrix](#)



P-778-2P
12 MM Bore
Box Qty.-4000
Chrysler
Avenger 2.5L
Montoro 3.5L
Mits. Galant
Mist. Eclipse2.5,3.0L
Apx. 1995-2001

P-720-2 | Diesel

5/8 Bore | V-8 8.2L; 1960-1970

[Back to Matrix](#)



P-720-2
General Motors
V-8 8.2L
8.2L Diesel
1960-1970
5/8 Bore

P-732-2 | Diesel

5/8 Bore | Box Qty 1500 | V-8 6.6L; 6.9L, 7.3L; Ford Truck 83-94; Navistar 75-91

[Back to Matrix](#)



P-739-2
5/8 Bore
Qty. 1500
Ford Truck
V-8 6.6L,
6.9L,7.3L
Ford Truck 83-94
Navistar 75-91

P-739-2 | Diesel

5/8 Bore | Box Qty 2500 | turbo diesel 1994

[Back to Matrix](#)



P-739-2
5/8 Bore
Box Qty. 2500
Ford , Navistar
Ford Truck with
turbo Diesel 96-02
Navistar with direct
turbo diesel 1994

P-742-2DP | Diesel

5/8 Bore | Box Qty 4000 | 4 Cyl. 3.9L; 6 Cyl. 5.9L

[Back to Matrix](#)



P-742-2DP
5/8 Bore
Box Qty. 4000
Cummins
4 Cyl. 3.9L
6 Cyl. 5.9L
Various B series
Diesel Applications

P-743-2DP | Diesel

5/8 Bore | Box Qty 3000 | 6 Cyl. 8.3L

[Back to Matrix](#)



P-743-2P
5/8 Bore
Box. Qty. 3000
Cummins Diesel
6 Cyl. 8.3L
Various C-series

P-751-2P | Diesel

5/8 Bore | Box Qty 2150 | 6 cyl; 6.7L, 7.6L, 8.6L; Trucks 95-96

[Back to Matrix](#)



P-751-2P
5/8 Bore
Box Qty. 2150
Navistar
6 cyl.
6.7L,7.6L,8.6L
Trucks 95-96

P-491-1 | Ford

5/8bore | Box Qty 5000 | 8 Cyl. 6.4L, 7.0L; 1968-1970

[Back to Matrix](#)



P-491-2
Qty.-5000
Ford , Mercury
5/8 bore
8 Cyl. 6.4L,7.0L
1968-1970

P-534-2 | Ford

5/8 Bore | Box Qty 3500 | V-8 4.7l, 5.0L, 5.8l; Mercury 1965-1969

[Back to Matrix](#)



P-534-2
Qty.-3500
Ford-Mercury
5/8 Bore
V-8 4.7l,5.0L,5.8L
Ford 1965-1974
Mercury 1965-1969

P-537-2 | Ford

Box Qty 1500 | 8 Cyl. 7.0L, 7.5L; Ford 1968-1980; Mercury 1968-1978; Lincoln 1968-1978

[Back to Matrix](#)



P-537-2
Qty. 1500
Ford, Mercury
8 Cyl. 7.0L, 7.5L
Ford 1968-1980
Mercury 1968-1978
Lincoln 1968-1978

P-548-2 | Ford

5/8bore | Box Qty 5000 | V-8 4.2L, 5.0L; 5.8L, 6.6l; Ford 1970-1980; Lincoln 1973-1980; Mercury 1970-1980

[Back to Matrix](#)



P-548-2
Qty-5000
5/8 bore
Ford
V-8 4.2L,5.0L,
5.8L,6.6L
Ford 1970-1980
Lincoln 1973-1980
Mercury 1970-1980

P-619-2 | Ford

5/8 Bore | Box Qty 2500 | 4 Cyl. 2.3l; 6 Cyl. 3.3L; 1974-1980

[Back to Matrix](#)



P-619-2
Qty. 2500
5/8 Bore
Ford
4 Cyl. 2.3L
6 Cyl. 3.3L
Ford Mercury
1974 -1980

P-636-2 | Ford

5/8 Bore | Box Qty 4000 | 6 Cyl. 4.1 L; 1970-1980

[Back to Matrix](#)



P-636-2
5/8 Bore
Qty. 4000
Ford
6 Cyl. 4.1L
Ford , Mercury
1970-1980

P-639-2 | Ford

5/8 Bore | Box Qty 3000 | 6 Cyl. 4.0L., 4.9L; 1965-1980

[Back to Matrix](#)



P-639-2
5/8 Bore
Qty. 3000
Ford Motor
6 Cyl. 4.0L.,4.9L
Ford Truck
1965-1980

P-639-2P | Ford

5/8 Bore | Box Qty 3000 | 6 Cyl. 4.0, 4.9L; Truck 65-80

[Back to Matrix](#)



P-639-2P
5/8 Bore
Box Qty.-3000
Ford Motor
6 Cyl. 4.0,4.9L
Truck 65-80
Shield on back

P-644-2 | Ford

5/8 Bore | Box Qty 2500 | V-8-5.4L, 5.8L; 5.9L, 6.4L, 7.0L; 1958-1976

[Back to Matrix](#)



P-644-2
5/8 Bore
Qty.- 2500
Ford
V-8-5.4L,5.8L
5.9L,6.4L,7.0L
Ford, Mercury
1958-1976

P-688-2P | Ford

5/8 Bore | Box Qty 1500 | V-8-4.2L; 5.0L, 5.8L; 1979-1981

[Back to Matrix](#)



P-688-2P
Qty-1500
5/8 Bore
Ford Motors
V-8-4.2L
5.0L,5.8L
Ford Lincoln
Mercury
1979-1981

P-695-2P | Ford

5/8 Bore | Box Qty 3500 | 4 Cyl.-1.6l, 1.9l; Escort 81-90; Lynx-1981-1987

[Back to Matrix](#)

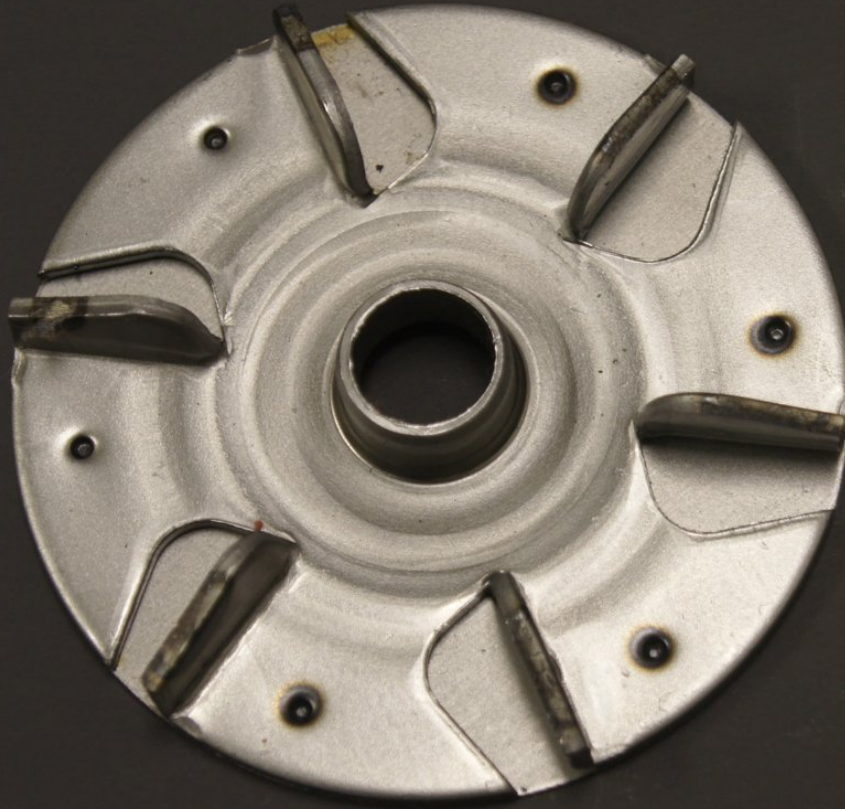


P-695-2P
5/8 Bore
Qty-3500
Ford Motors
4 Cyl.-1.6L,1.9L
Escort 81-90
Lynx-1981-1987

P-698-2P | Ford

12 MM. Bore | Box Qty 3500 | 4 Cyl. 1.9L; 1981-1987

[Back to Matrix](#)



P-698-2P
12 MM. Bore
Qty. 3500
Ford Motors
4 Cyl. 1.9L
Escort
Mercury Lynx
1981-1987

P-699-2 | Ford

5/8 Bore | Box Qty 2500 | 4 Cyl. 2.3L; 1984-1991

[Back to Matrix](#)



P-699-2
5/8 Bore
Qty.-2500
Ford Motor
4 Cyl. 2.3L
Ford Tempo
Mercury Topaz
1984-1991

P-700-2 | Ford

5/8 Bore | Box Qty 5000 | V-6 3.0L; 1986-1994

[Back to Matrix](#)



P-700-2
5/8 Bore
Qty.-5000
Ford Motor
V-6 3.0L
Ford Taurus
Mercury Sable
1986-1994

P-701-2 | Ford

5/8 Bore | Box Qty 5000 | V-6-3.8L; 1988-1993

[Back to Matrix](#)

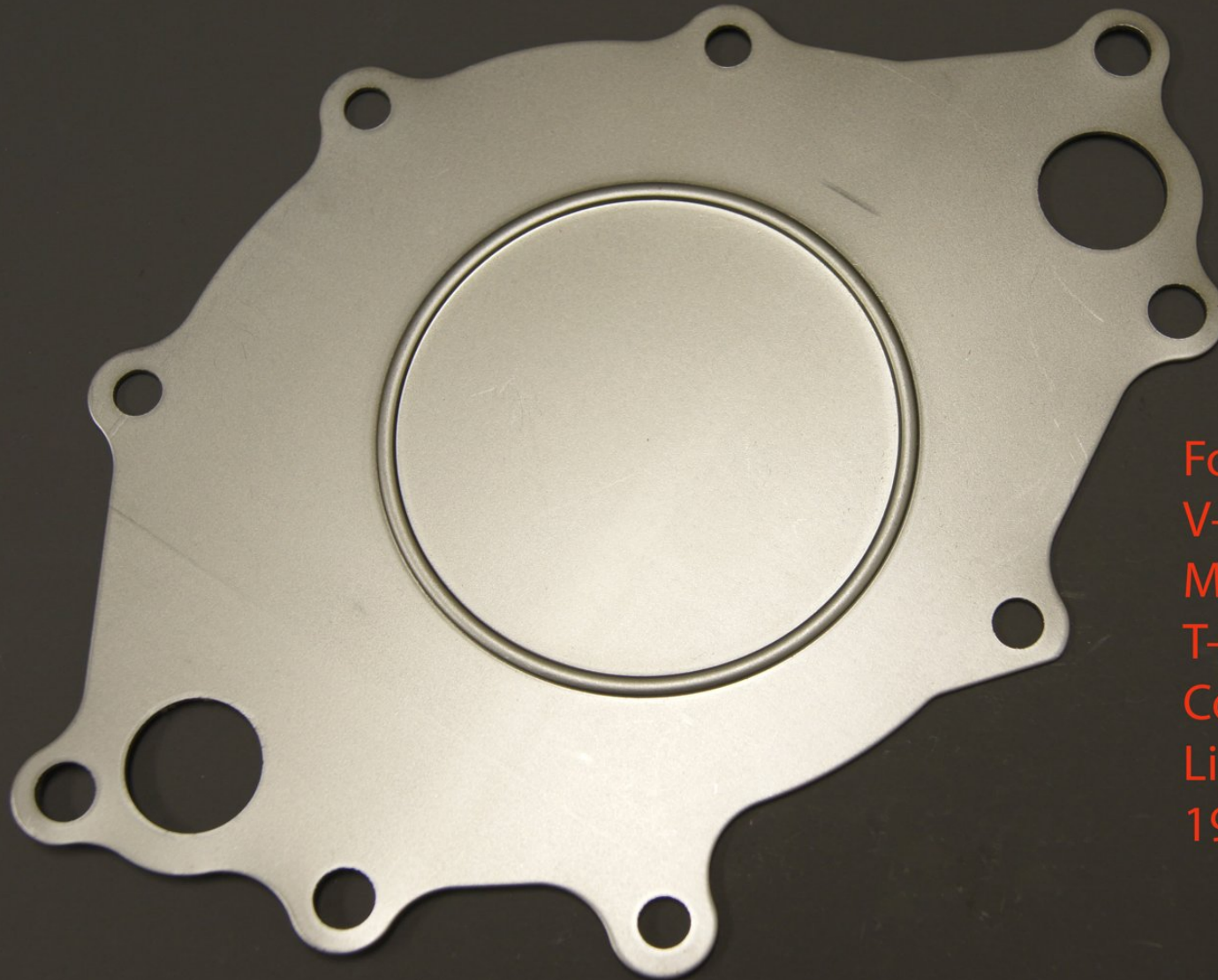


P-701-2
5/8 Bore
Qty.-5000
V-6-3.8L
Taurus-T-bird
Lincoln Continental
Mercury Sable
Mercury Cougar
1988-1993

P-702-20 | Ford

Mustang | V-8 5.0L; 1986-1993

[Back to Matrix](#)

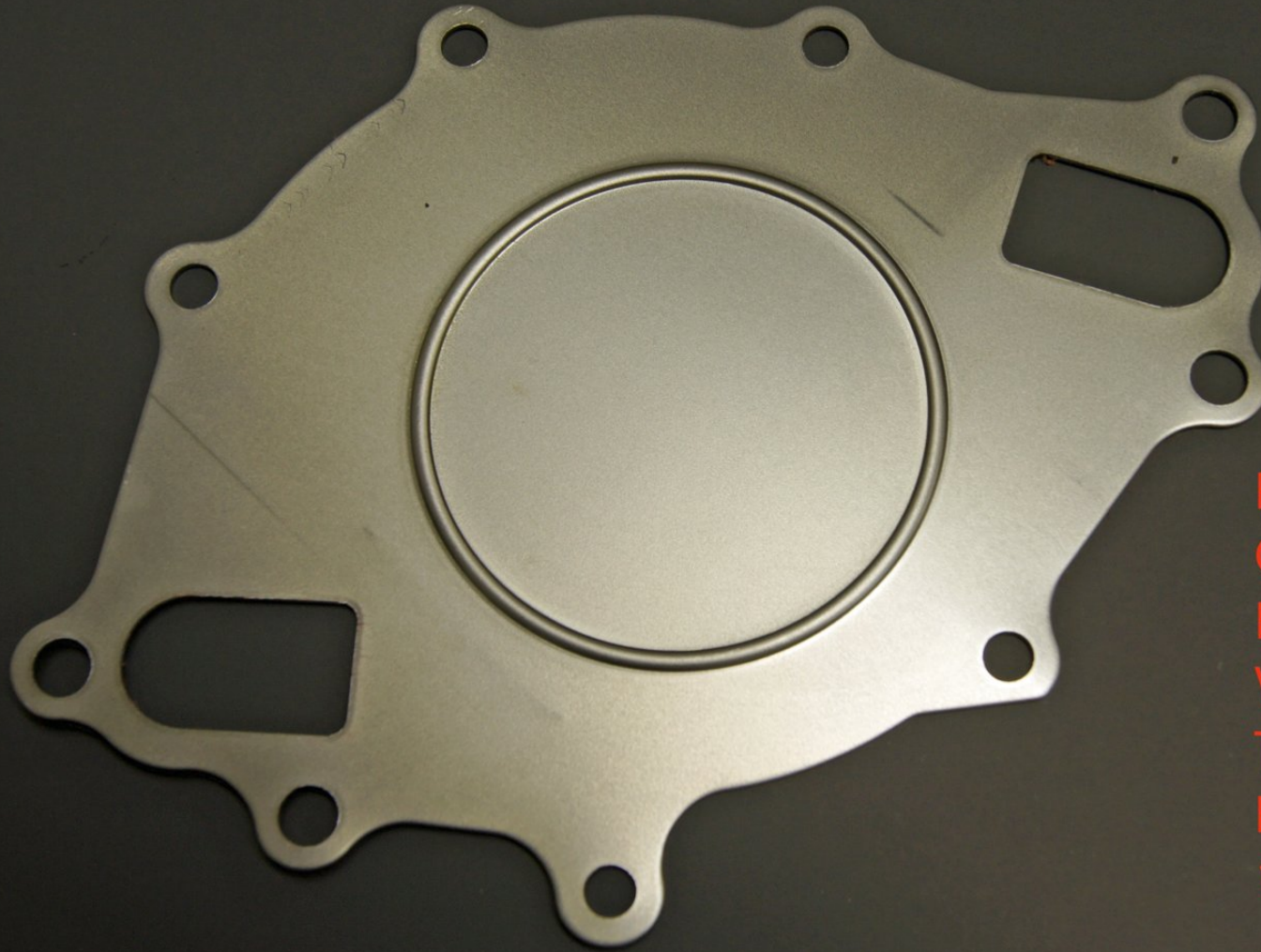


Ford Motors
V-8 5.0L
Mustang
T-bird
Cougar,Capri
Lincoln
1986-1993

P-703-20 | Ford

Truck | Box Qty 3000 | V-8 5.0L; 1987-1997

[Back to Matrix](#)

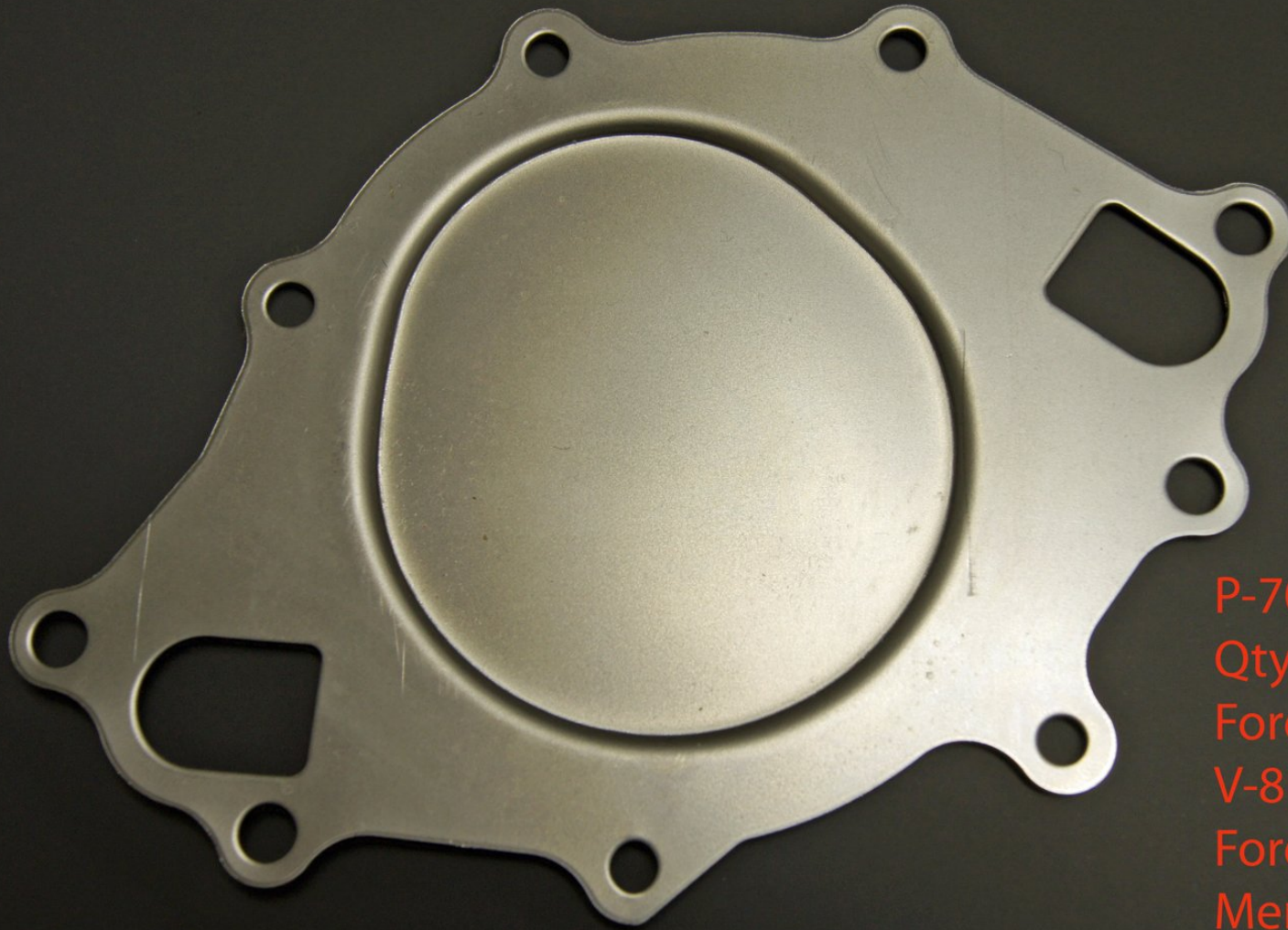


P-703-20
Qty.-3000
Ford Motor
V-8 5.0L
Truck
EF-150/350
1987-1997

P-704-20 | Ford

Box Qty 3000 | V-8 4.2L, 5.0L, 5.8L; Mercury 79-81

[Back to Matrix](#)

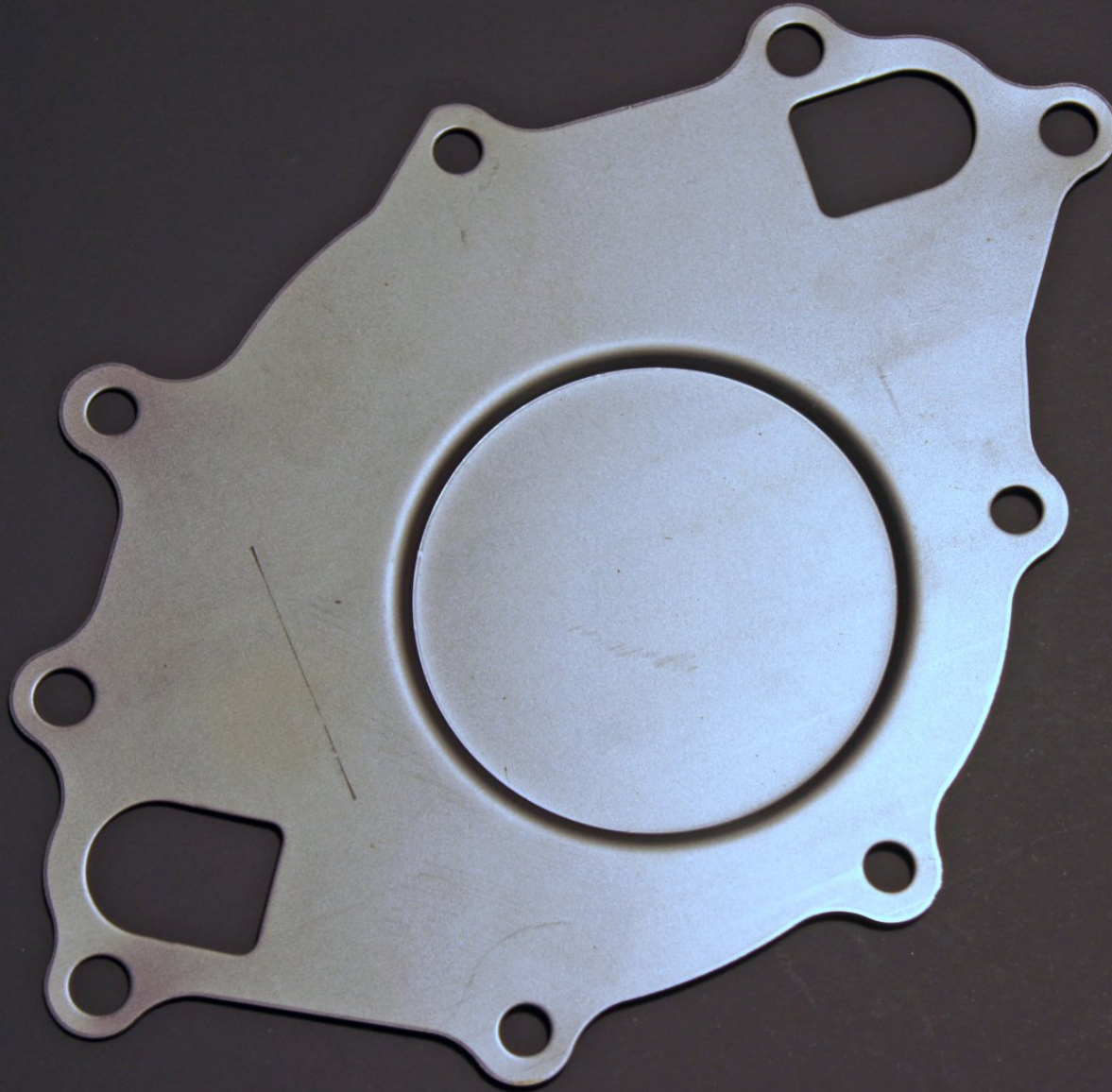


P-704-20
Qty.-3000
Ford Motor
V-8 4.2L,5.0L,5.8L
Ford, Lincoln
Mercury 79-81

P-705-20 | Ford

V-8 4.2L, 5.0L, 5.8L; 1979-1991

[Back to Matrix](#)



P-705-20
Ford Motor
V-8 4.2L,5.0L,5.8L
Ford , Mercury
1979-1991

P-707-2 | Ford

5/8 Bore | Box Qty 5000 | V-8 5.0L; 1986-1988

[Back to Matrix](#)



P-707-2
5/8 Bore
Qty.-5000
V-8 5.0L
Ford Mustang
Ford Truck
Merc. Cougar
Merc. Capri
1986-1988

P-708-20 | Ford

V-8-4.7L, 5.0L, 5.8L; Ford 1965-1974; Mercury 1965-74

[Back to Matrix](#)



P-708-20
Ford Motor
V-8-4.7L,5.0L,5.8L
Ford 1965-1974
Mercury 1965-74

P-711-2 | Ford

5/8 Bore | Box Qty 2500 | 4.2L, 5.0L, 5.8L; 1979-1991

[Back to Matrix](#)



P-711-2
5/8 Bore
Qty. -2500
Ford Motor
4.2L,5.0L,5.8L
Ford , Mercury
1979-1991

P-721-20 | Ford

V-8, 4.2, 5.0 | 5.8L, 6.6L; 1970-1984

[Back to Matrix](#)



P-721-20
Ford,Mercury
V-8 ,4.2,5.0
5.8L,6.6L
12 Mounting
Holes
1970-1984

P-721-20A | Ford

V-8 | 4.2L, 5.0L; 5.8L, 6.6L; 1970-1980

[Back to Matrix](#)

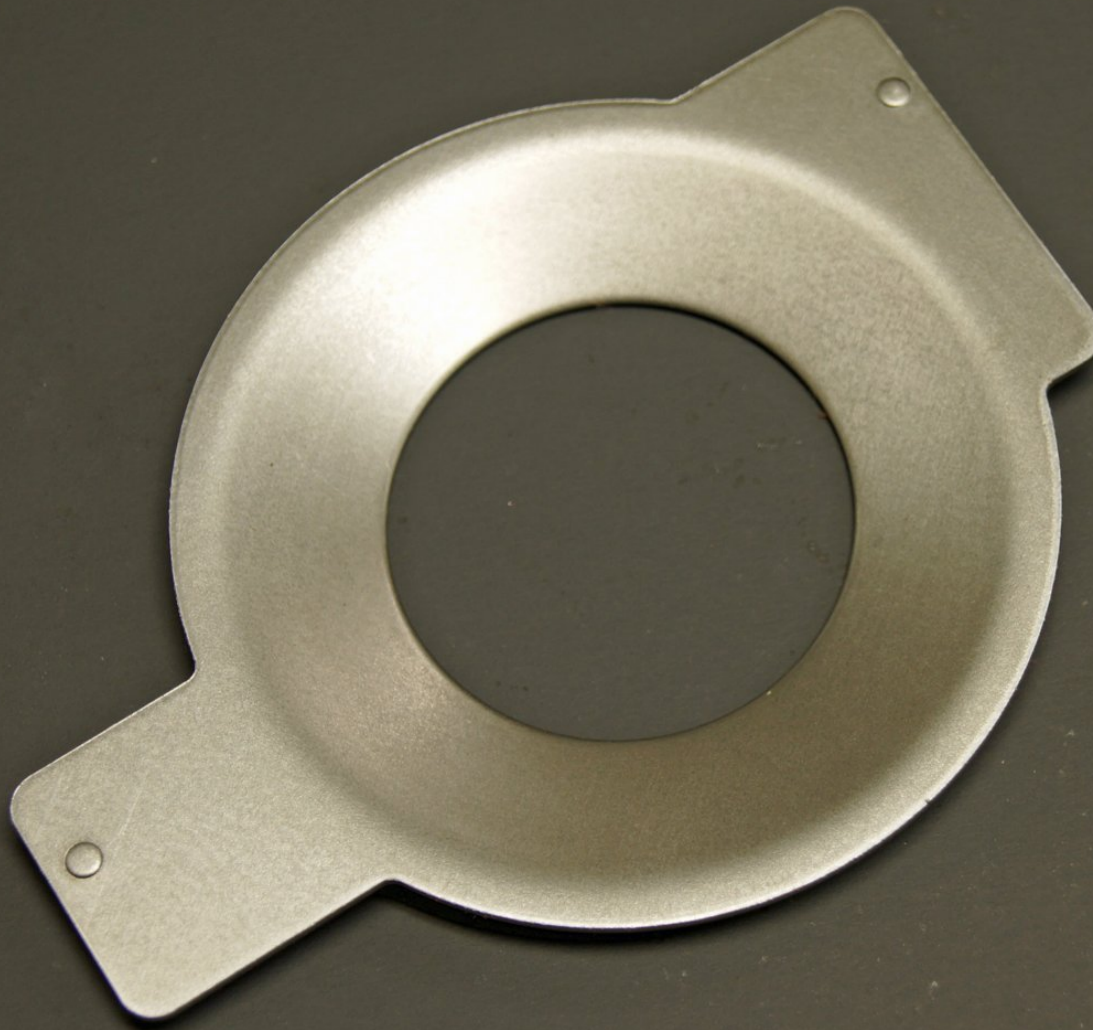


P-721-20A
Ford,Mercury
V-8 4.2L,5.0L
5.8L,6.6L
13 Hole
1970-1980

P-724-20 | Ford

Box Qty 5000 | 4 cyl. 1.9L; Escort 1991-96; Merc. Tracer 91-96

[Back to Matrix](#)



P-724-20
Qty. 5000
Ford, Mercury
4 cyl. 1.9L
Escort 1991-96
Merc. Tracer 91-96

P-726-2P | Ford

5/8 Bore | V-8 5.0L; T-bird 1991-1993; XR7-91-93

[Back to Matrix](#)



P-726-2P
5/8 Bore
Ford Mercury
V-8 5.0L
T-bird 1991-1993
Cougar XR7-91-93

P-729-2 | Ford

12 MM Bore | 4 Cyl. 1.8L, 2.0L; Ford Probe 93-97; Mazda 626 93-02; Mazda Mx-6 93-97; Mazda Protege 99-03

[Back to Matrix](#)



P-729-2

12 MM Bore

Ford

4 Cyl. 1.8L,2.0L

Ford Probe 93-97

Mazda 626 93-02

Mazda Mx-6 93-97

Mazda Protege 99-03

P-732-2 | Ford

5/8 Bore | Box Qty 1500 | V-8 6.6L; 6.9L, 7.3L; Ford Truck 83-94; Navistar 75-91

[Back to Matrix](#)



P-739-2
5/8 Bore
Qty. 1500
Ford Truck
V-8 6.6L,
6.9L,7.3L
Ford Truck 83-94
Navistar 75-91

P-734-2 | Ford

!2 MM Bore | Box Qty 5000 | 6 cyl. 3.0L; 95-04; 95-04

[Back to Matrix](#)



P-734-2
!2 MM Bore
Box Qty. 5000
Ford
6 cyl. 3.0L
Taurus 95-04
Winstar 95-04

P-735-2 | Ford

12 MM Bore | Box Qty 5000 | V-6 3.8L; 94-95; Merc. Sable 94-95

[Back to Matrix](#)



P-735-2
12 MM Bore
Qty. - 5000
Ford
V-6 3.8L
Winstar 95
Taurus 94-95
Continental 94
Merc. Sable 94-95

P-737-2 | Ford

12 MM Bore | 94-95; Merc. Sable 94-95

[Back to Matrix](#)



P-737-2
12 MM Bore
Ford Motor
Winstar 95
Taurus 94-95
Continental 94
Merc. Sable 94-95

P-739-2 | Ford

5/8 Bore | Box Qty 2500 | turbo Diesel 96-02; turbo diesel 1994

[Back to Matrix](#)



P-739-2
5/8 Bore
Box Qty. 2500
Ford , Navistar
Ford Truck with
turbo Diesel 96-02
Navistar with direct
turbo diesel 1994

P-740-2P | Ford

5/8 Bore | Box Qty 2000 | 4 Cyl. 2.3L, 2.5L; 95-02; Mazda B2300 95-97

[Back to Matrix](#)



P-740-2P

5/8 Bore

Box Qty. 2000

4 Cyl. 2.3L,2.5L

Ford

Ranger 95-02

Mazda B2300 95-97

P-741-2 | Ford

5/8 Bore | Box Qty 5000 | 8 cyl. 4.6L; 1991-1997

[Back to Matrix](#)



P-741-2
Box Qty. 5000
5/8 Bore
Ford-Mercury
8 cyl. 4.6L
1991-1997

P-745-20 | Ford

Box (| Box Qty 3000 | V-8 5.5L, 5.8L; 6.4L, 6.7L, 7.0L; Ford 1958-1968; Mercury-1961-1968; Edsel 1958-1960

[Back to Matrix](#)



P-745-20

Box Qty.-3000

Ford

V-8 5.5L,5.8L

6.4L,6.7L,7.0L

Ford 1958-1968

Mercury-1961-1968

Edsel 1958-1960

P-752-2 | Ford

12 MM Bore | V-6 3.8L; Mustang 96-04; Cougar 96-97; T-bird 96-97; Windstar 96-02

[Back to Matrix](#)



P-752-2
12 MM Bore
Ford/Mercury
V-6 3.8L
Mustang 96-04
Cougar 96-97
T-bird 96-97
Windstar 96-02

P-754-2 | Ford

5/8 Bore | 6 cyl; 2.4L, 2.8L, 3.3L; Falcon 60-68; Bronco 66-74; Maverick 70-73; Ford Truck 61-70; Comet 60-75

[Back to Matrix](#)



P-754-2
5/8 Bore
Ford-Mercury
6 cyl.
2.4L,2.8L,3.3L
Falcon 60-68
Bronco 66-74
Maverick 70-73
Ford Truck 61-70
Comet 60-75

P-760-2 | Ford

Bore | Box Qty 2500 | V-8 4.6L, 5.4L; 1997-2000

[Back to Matrix](#)



P-760-2
12 MM Bore
Box Qty.-2500
Ford
V-8 4.6L, 5.4L
Expedition
Navigator
1997-2000

P-762-2 | Ford

12MM Bore | Box Qty 2000 | V-8 4.6L, 5.4L; Excursion 2000-2002; Expedition 97-02; Navigator 01-02

[Back to Matrix](#)



P-762-2
12 MM Bore
Box Qty.-2000
Ford
V-8 4.6L,5.4L
Excursion 2000-2002
Expedition 97-02
E-100-350 97-02
F100-350 99-02
Navigator 01-02

P-763-20 | Ford

Navistar | V-87.3L; 1997-2003

[Back to Matrix](#)



P-763-20
Ford Truck
Navistar
V-8 7.3L
1997-2003

P-764-2 | Ford

12 MM Bore | Box Qty 3000 | V-8 4.6L; Lincoln, 93-02

[Back to Matrix](#)



P-764-2
12 MM Bore
Box Qty.-3000
Ford Motor
V-8 4.6L
Ford, Mercury
Lincoln,93-02

P-768-20 | Ford

Box Qty 2000 | 4 Cyl. 2.0L; Escort 97-02; Tracer 97-99

[Back to Matrix](#)

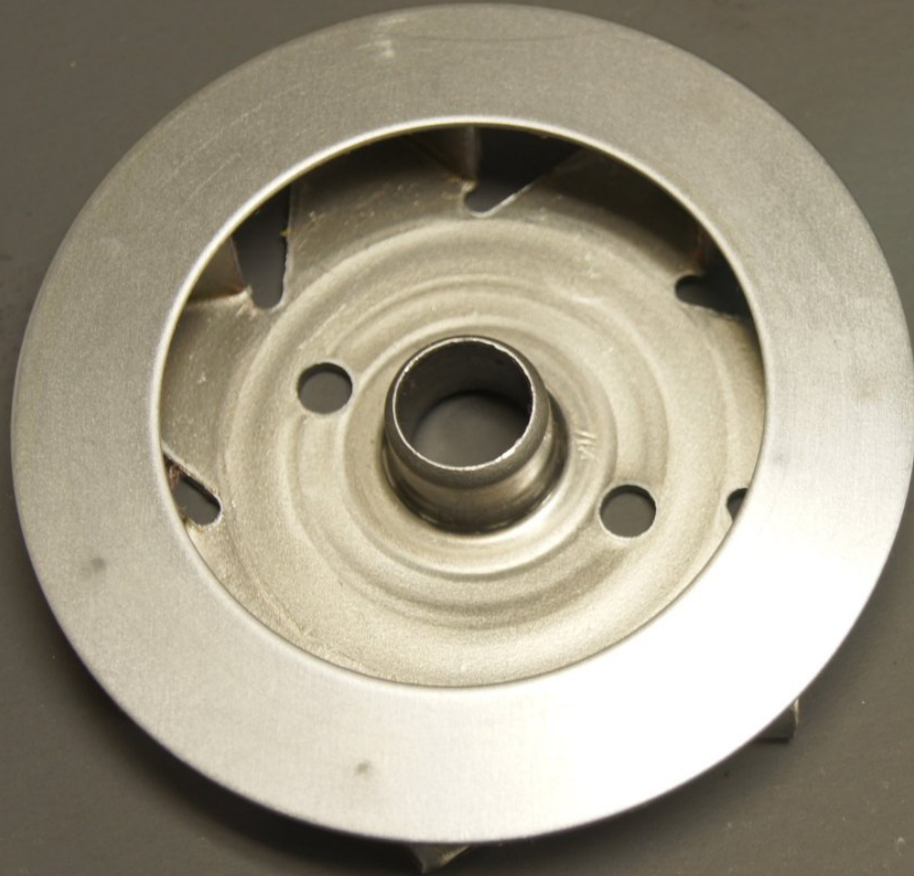


P-768-20
Box Qty.-2000
4 Cyl. 2.0L
Escort 97-02
Tracer 97-99

P-774-2P | Ford

12 MM Bore | Box Qty 2500 | Mustang 2001-2004; Lincoln 1991-2004; Merc. Marquis 01-04

[Back to Matrix](#)



P-774-2P
Box Qty.-2500
12 MM Bore
Ford 4.6L
Mustang 2001-2004
Lincoln 1991-2004
Merc. Marquis 01-04

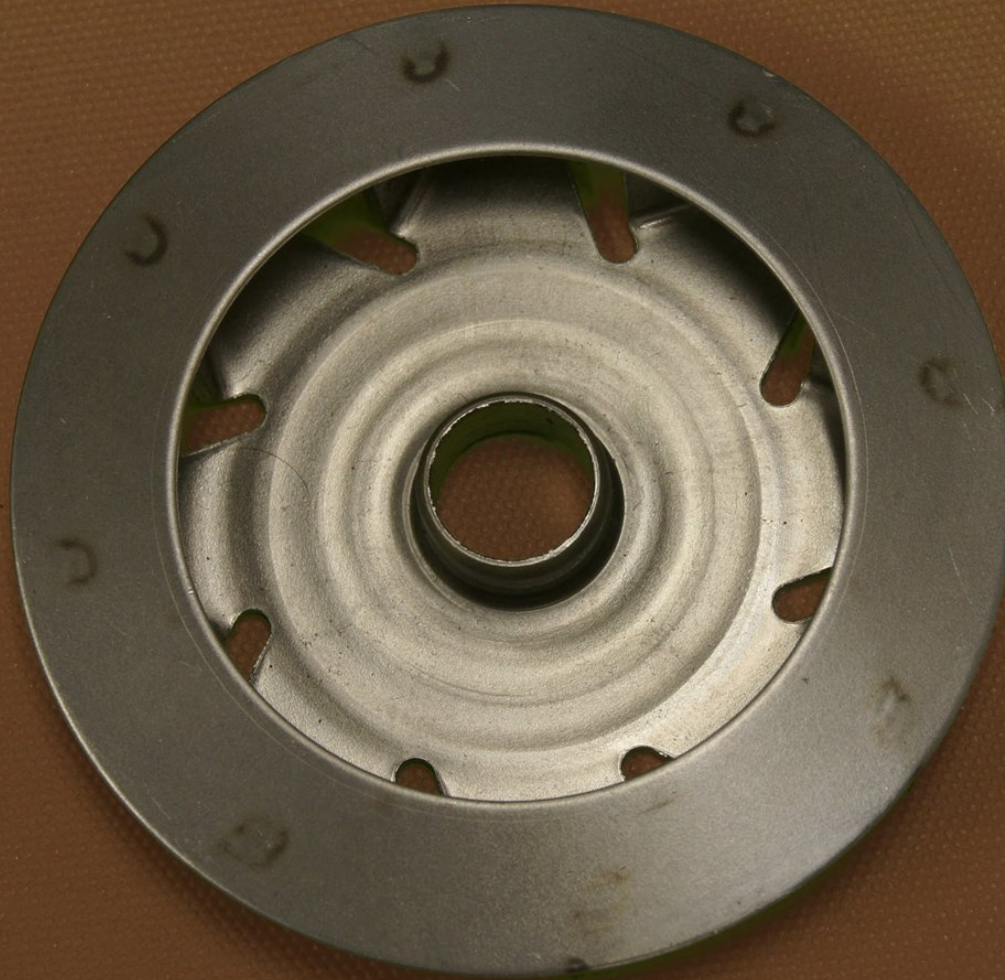


P-776-20
Ford
Raceway Plate

34131 | GM

5/8 Bore | Box Qty 4000 | 8.1L; 2001-2010

[Back to Matrix](#)

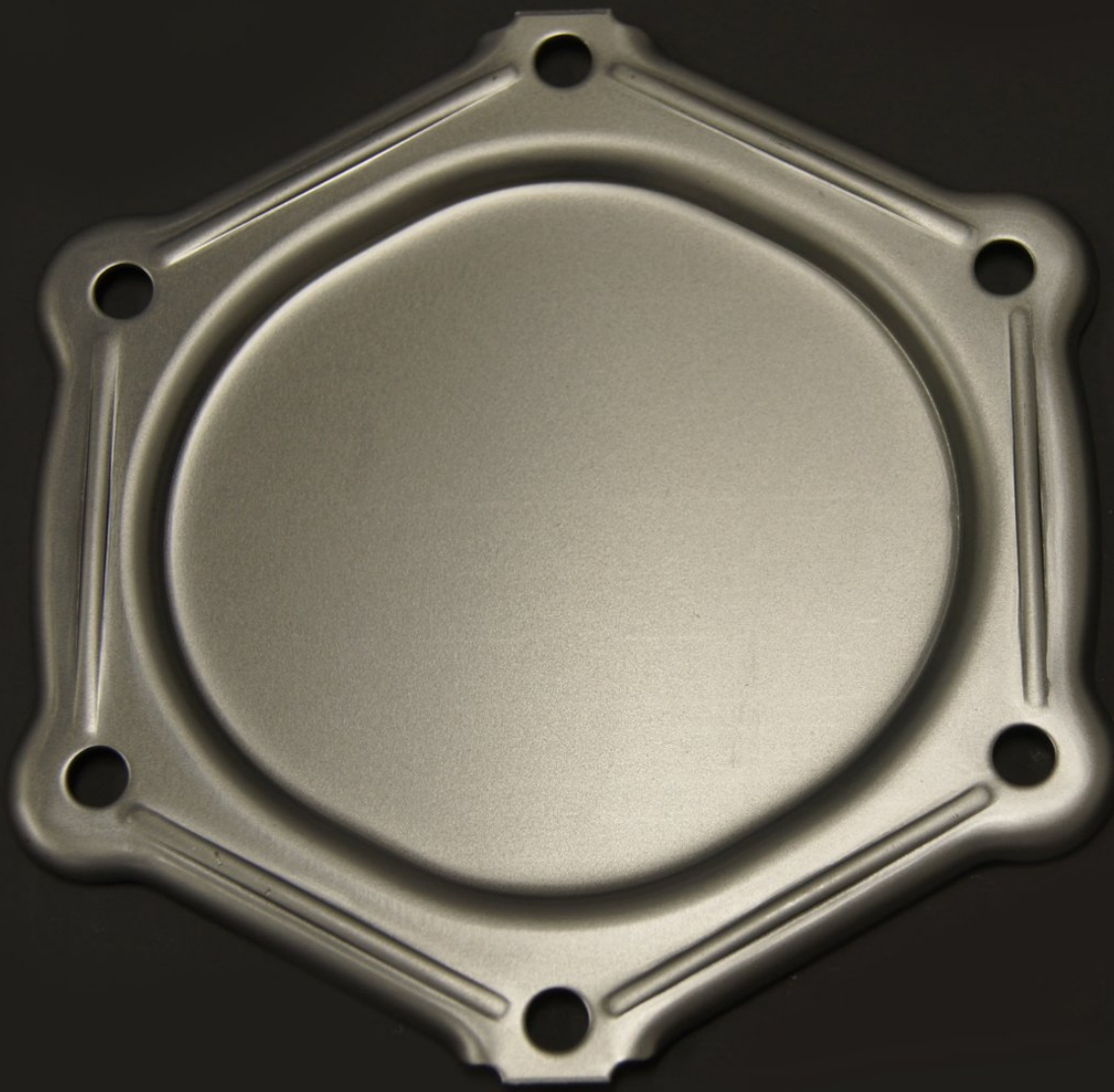


34131
Box Qty.-4000
5/8 Bore
Chevy/Gmc
8.1L
2001-2010
O.E. Source

P-132-B-20 | GM

Motors | Box Qty 5000 | V-6 3.3L, 3.8L; 4.3L up to 7.4 L

[Back to Matrix](#)



P-132-B-20
Box Qty. 5000
General Motors
1955 and up
V-6 3.3L , 3.8L
V-8 engines
4.3L up to 7.4 L

P-132-B20SS | GM

General Motors | 1955 and up; Stainless steel

[Back to Matrix](#)



P-132-B20SS
General Motors
1955 and up
Stainless steel

P-426-2 | GM

General Motors | Box Qty 1500 | V-8 4.3L, 5.4 L; V-8 5.4L, 5.7L; V-8 6.6L; Apx. 1965-1980

[Back to Matrix](#)



P-426-2
QTY. 1500
General Motors
V-8 4.3L ,5.4 L
V-8 5.4L,5.7L
V-8 6.6L
Olds. Pontiac
Apx. 1965-1980

P-482-2 | GM

Qty | V-6-3.3L, 3.8; V-8-4.31, 4.41, 4.7L; 5.4L, 5.7L, 6.6L, 7.4L

[Back to Matrix](#)



P-482-2
Box Qty 2500
General Motors
V-6-3.3L,3.8L
V-8-4.31,4.41,4.7L
5.4L,5.7L,6.6L,7.4L
1955 and up

P-482-2A | GM

GeneralMotors | Box Qty 5000 | V-6-3, 3L-3.8l; V-8-4.3L, 4.4L, 4.7l; 5.0L, 5.4L, 5.7l; 6.6L, 7.4l

[Back to Matrix](#)



P-482-2A
Qty. 5000
General Motors
V-6-3,3L-3.8L
V-8-4.3L, 4.4L,4.7L
5.0L,5.4L,5.7L
6.6L,7.4L
1955 and up
Sam as P-482-2
without insert

P-666-2 | GM

5/8 Bore | Box Qty 4000 | V-8 4.3L; 5.7L., 6.6L; Gas or diesel; 1970-1980

[Back to Matrix](#)



P-666-2
5/8 Bore
Qty.-4000
General Motors
V-8 4.3L
5.7L.,6.6L
Gas or diesel
models with A.C.
1970-1980

P-713-2P | GM

13 MM. Bore | Box Qty 2500 | 3.0, 3.3, 3.8L

[Back to Matrix](#)



P-713-2P
Qty. 2500
V-6
3.0,3.3,3.8L
Buick, Olds.
Pontiac
13 MM. Bore

P-714-2 | GM

5/8 Bore | Box Qty 4000 | V-8 5.7L; 1984-1991

[Back to Matrix](#)



P-714-2
5/8 Bore
Qty. -4000
General Motors
V-8 5.7L.
Corvette
1984-1991

P-715-2 | GM

5/8 Bore | Box Qty 5000 | V-6 4.3L; V-8 5.0L; 1987-2004

[Back to Matrix](#)



P-715-2
5/8 Bore
Qty.-5000
V-6 4.3L
V-8 5.0L
General Motors
1987-2004

P-717-2G | GM

General Motors | Box Qty 5000 | 4 Cyl. 1.6 L; 1988-1990

[Back to Matrix](#)



P-717-2G
Qty.-5000
General Motors
4 Cyl. 1.6 L
Pontiac Lemans
1988-1990



**P-719-2W
General Motors
4 Cyl. 2.5L**

**Buick , Chevrolet,
Olds Pontiac models
Using universal bolt
on pulley with press
on hub.
1980-1986**

P-720-2 | GM

5/8 Bore | V-8 8.2L; 8.2L Diesel; 1960-1970

[Back to Matrix](#)



P-720-2
General Motors
V-8 8.2L
8.2L Diesel
1960-1970
5/8 Bore

P-722-2 | GM

15 MM Bore | 4 Cyl; 1.8L, 2.0L; Buick Skyhawk 82-86; 82-86; Pontiac J2000 82-94

[Back to Matrix](#)



P-722-2

15 MM Bore

4 Cyl.

1.8L, 2.0L

Buick Skyhawk 82-86

Olds Firenza 82-86

Pontiac J2000 82-94

Pontiac Lemans 1990

P-725-2P | GM

5/8 Bore | Box Qty 5000 | 4 Cyl. 2.0L, 2.2L; Buick 1987-1996; Chevrolet 87-96; Cavalier 92-2002; S-10 1994-2003; 94-03

[Back to Matrix](#)



P-725-2P
Box Qty. 5000
4 Cyl. 2.0L,2.2L
Buick 1987-1996
Chevrolet 87-96
Cavalier 92-2002
S-10 1994-2003
Gmc-S15 94-03
Gmc Sonoma 94-03
5/8 Bore

P-733-2P | GM

12 MM Bore | Box Qty 5000 | V-6 3.0L, 3.3L, 3.8L; Pontiac 85-2000; 1992-1995

[Back to Matrix](#)



P-733-2P
12 MM Bore
General Motors
v-6 3.0L,3.3L,3.8L
Buick Olds,
Pontiac 85-2000
Chevy Lumina
1992-1995
Box Qty. 5000

P-744-2 | GM

5/8 Bore | Box Qty 3500 | 8 Cyl. 6.0L; 7.0L, 7.4L; 1976-1990

[Back to Matrix](#)

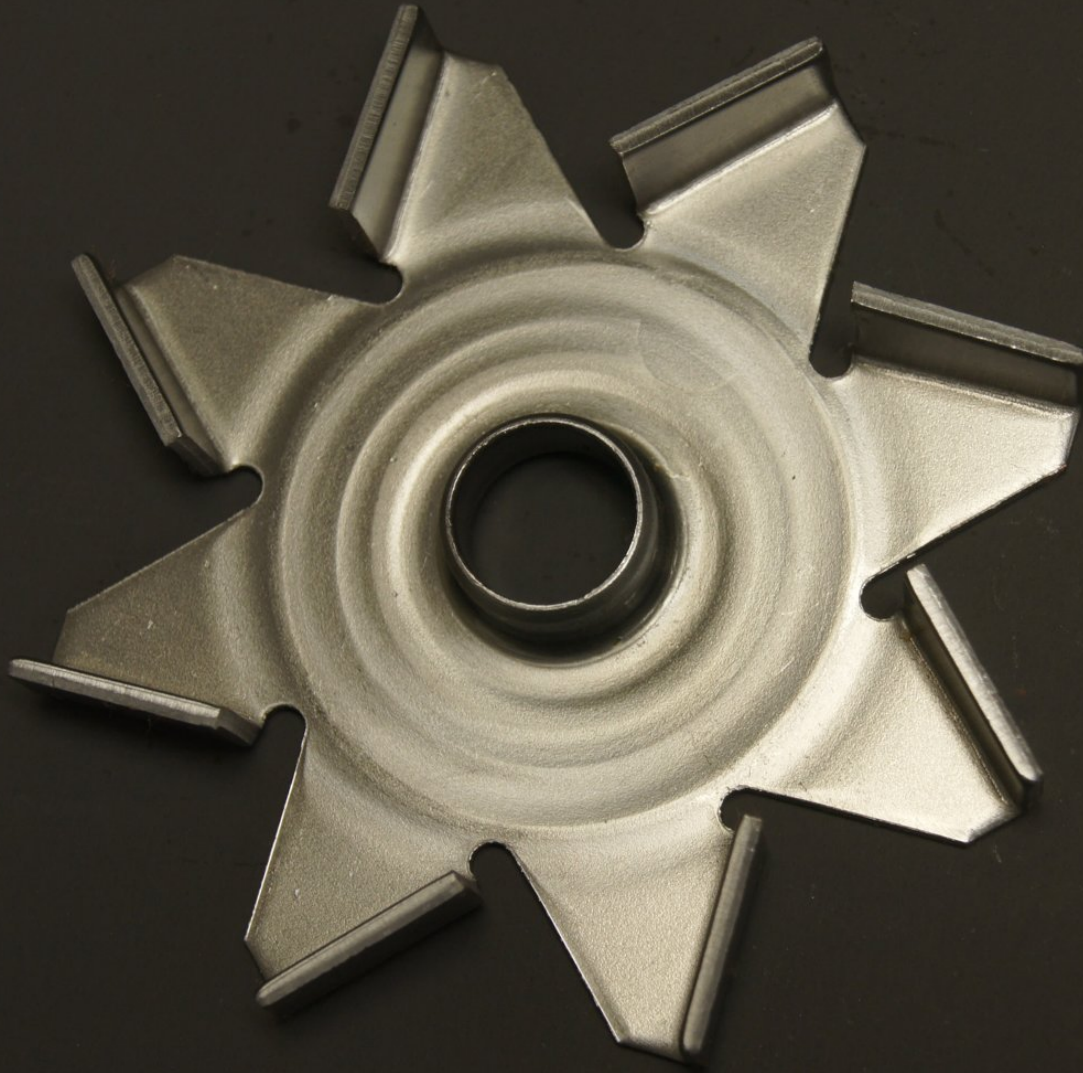


P-744-2
Box Qty.-3500
5/8 Bore
General Motors
8 Cyl. 6.0L
7.0L,7.4L
1976-1990

P-746-2 | GM

5/8 Bore | Box Qty 3500 | V-8 7.4L; 1988-2000

[Back to Matrix](#)



P-746-2
5/8 Bore
Box qty.-3500
General Motors
V-8 7.4L
Chevy Gmc Truck
1988-2000

P-748-2 | GM

12 MM Bore | Box Qty 4000 | 4 Cyl 2.4L; 1996-2002

[Back to Matrix](#)



P-748-2
12 MM Bore
Box Qty-4000
General Motors
4 Cyl 2.4L
Quad Four
Buick Chevy
Olds,Pontiac
1996-2002

P-755-2 | GM

5/8 Bore | 4 Cyl. 2.5L; 6 Cyl. 3.8L, 4.1L

[Back to Matrix](#)

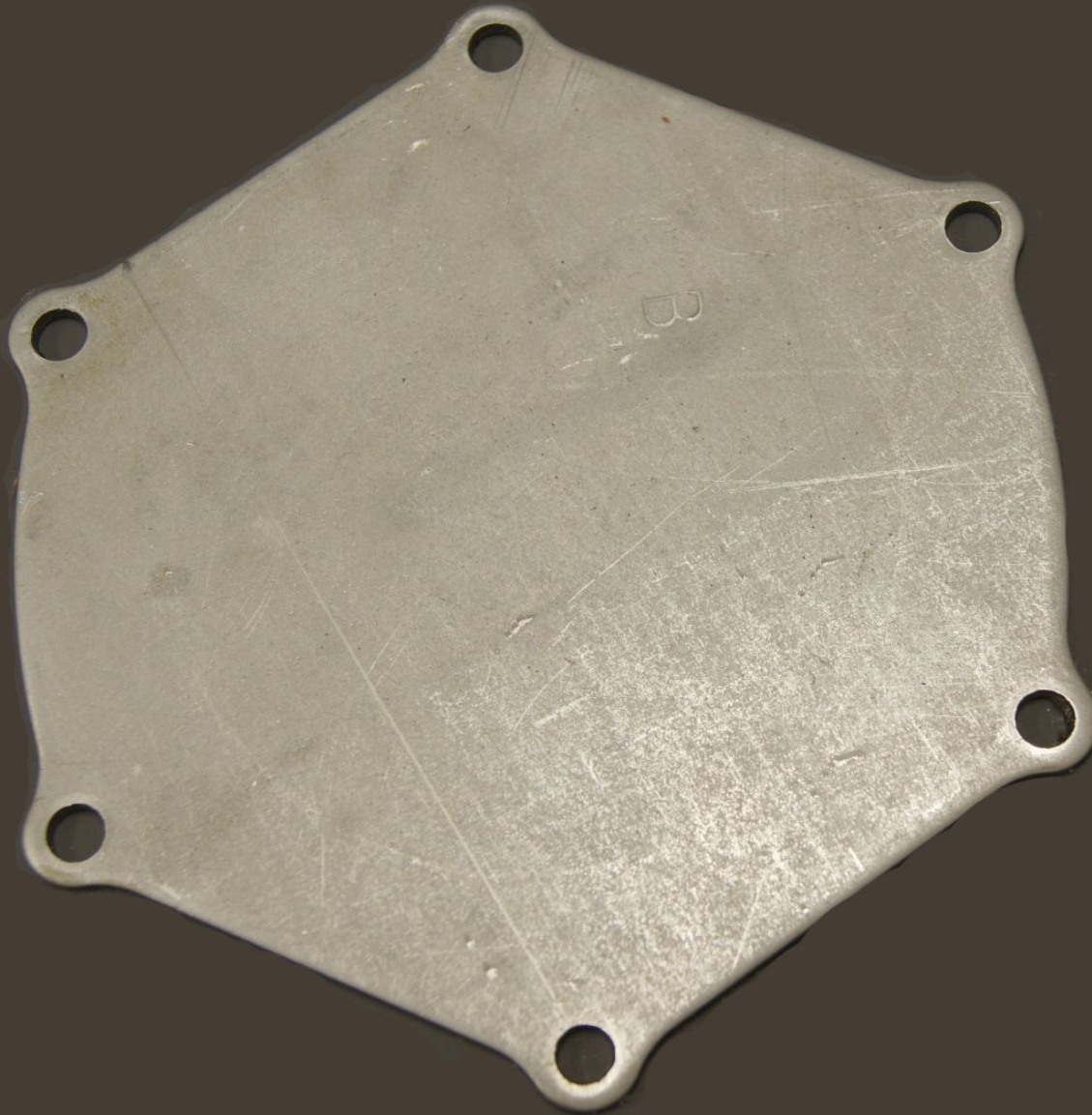


P-755-2
5/8 Bore
General Motors
4 Cyl. 2.5L
6 Cyl. 3.8L,4.1L
Gmc 1962-1980
Amc with Gm. 151eng.

P-756-20 | GM

General Motors | Box Qty 3000 | 8 Cyl. eng; 6.5L, 6.6L, 7.0L, 7.4L; 1967-1985; 2000-2009

[Back to Matrix](#)

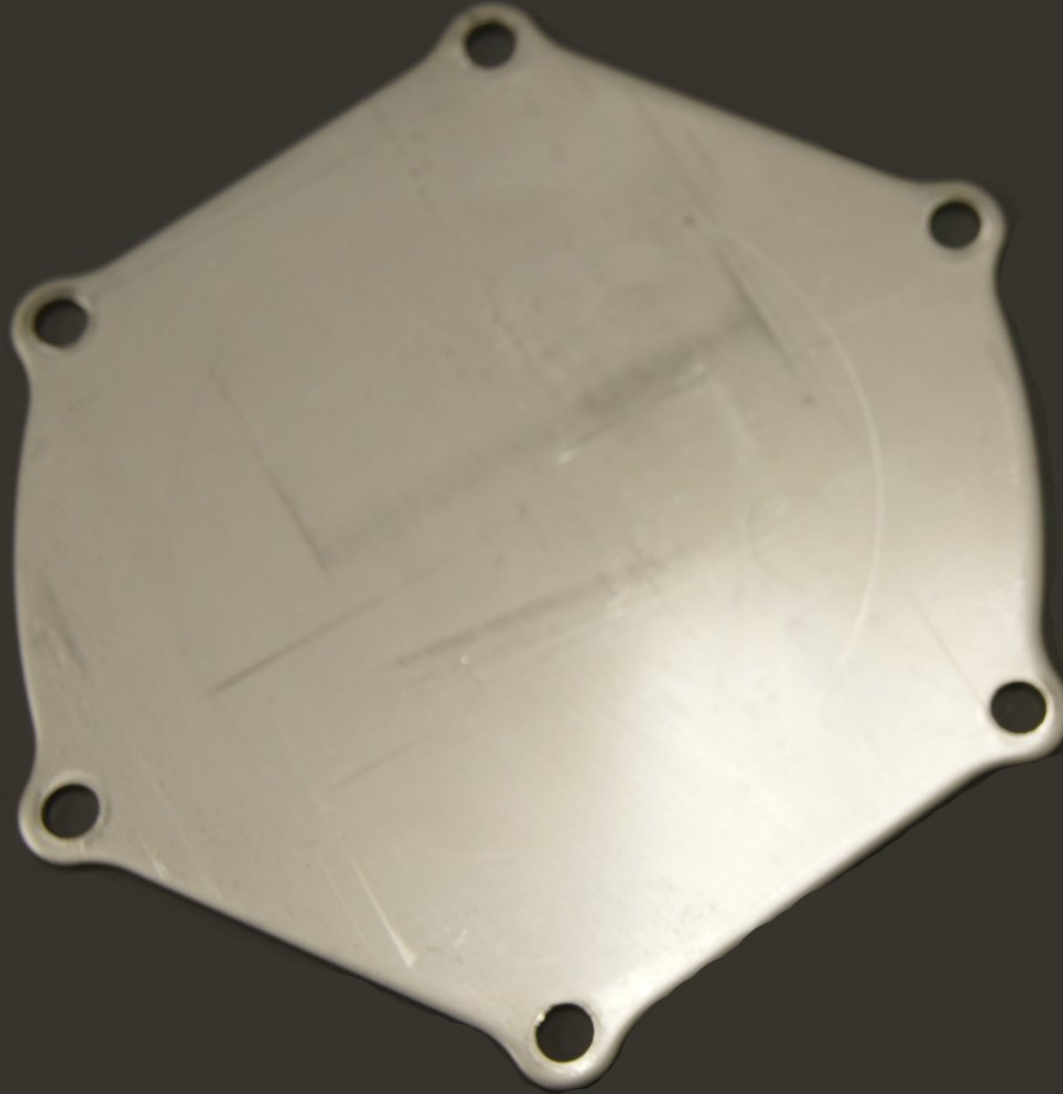


P-756-20
Box Qty.-3000
General Motors
8 Cyl. eng.
6.5L,6.6L,7.0L,7.4L
Chevy Gmc Truck
1967-1985
2000-2009

P-756-20SS | GM

General Motors | 8 Cyl. engines

[Back to Matrix](#)



P-756-20SS
General Motors
8 Cyl. engines
Same as P-756-20
Stainless Steel

P-757-2DP | GM

5/8 Bore | V-8 4.1L; 1982-1985

[Back to Matrix](#)



P-757-2DP
5/8 Bore
General Motors
V-8 4.1L
1982-1985
Plate on both sides

P-758-2DP | GM

5/8 Bore | 4 Cyl. 1.9L; Saturn 91-2000

[Back to Matrix](#)



P-758-2DP
5/8 Bore
General Motors
4 Cyl. 1.9L
Saturn 91-2000
Plate on both sides

P-759-2P | GM

5/8Bore | 4 Cyl. 1.9L; 1991-1997

[Back to Matrix](#)

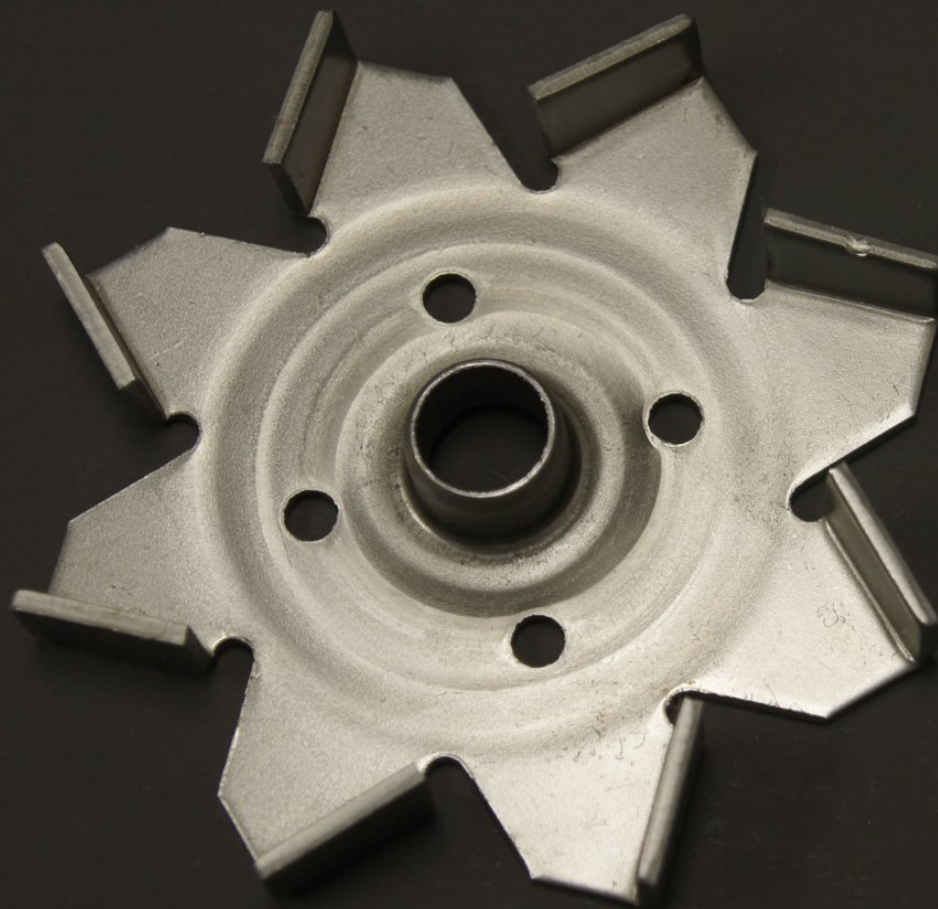


P-759-2P
5/8 Bore
General Motors
Saturn
4 Cyl. 1.9L
1991-1997
Top Plate only

P-766-2 | GM

General Motors | Box Qty 3000 | V-8 4.6L; Cadillac 95-04; Olds.Aurora 95-04

[Back to Matrix](#)



P-766-2
Box Qty.-3000
General Motors
V-8 4.6L
Cadillac 95-04
Olds. Aurora 95-04
Pontiac -2004

P-767-2 | GM

Bore | Box Qty 4000 | 8 Cyl. 350-5.7L; 1992-1997

[Back to Matrix](#)

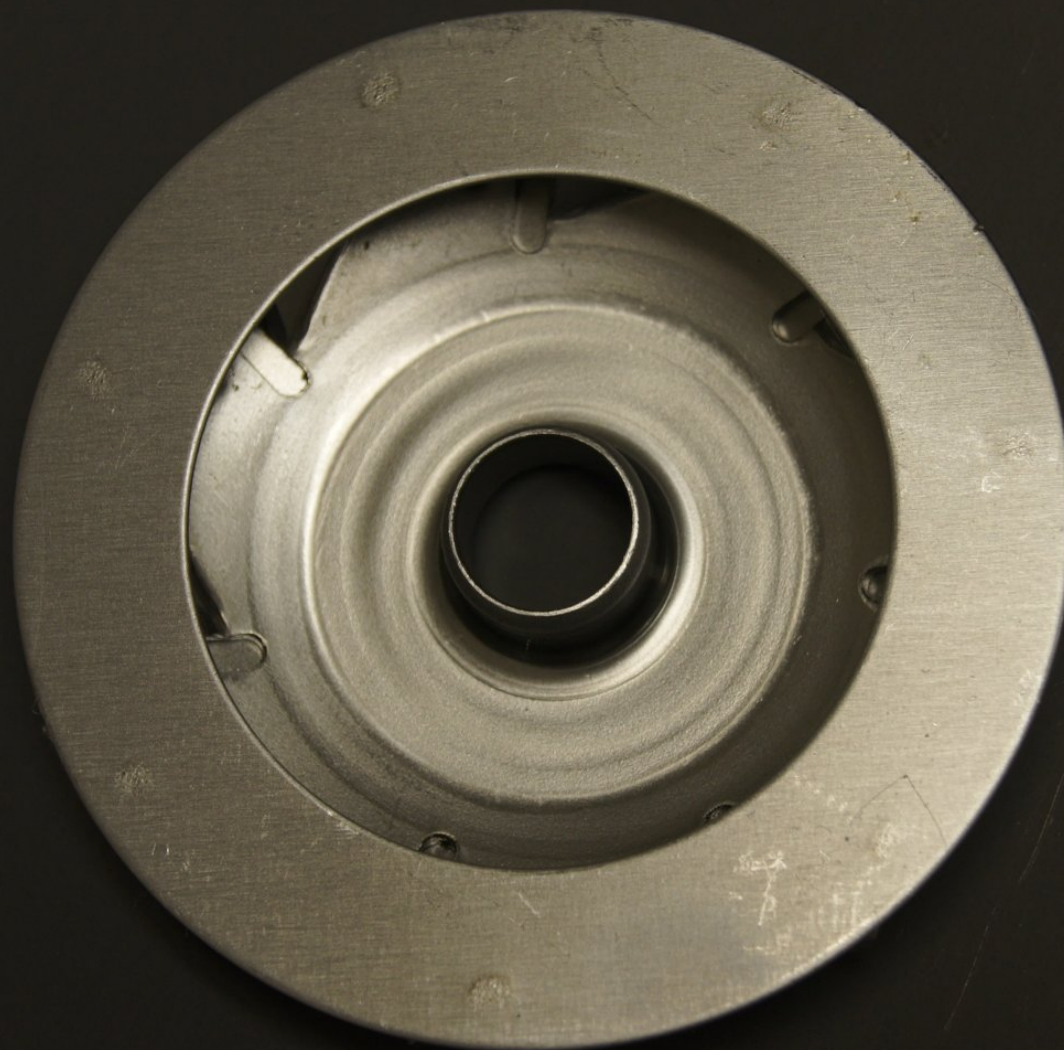


P-767-2
Qty. 4000
General Motors
10 MM Bore
8 Cyl. 350 -5.7L
1992-1997
Camaro
Corvette
Cadillac
Buick Roadmaster

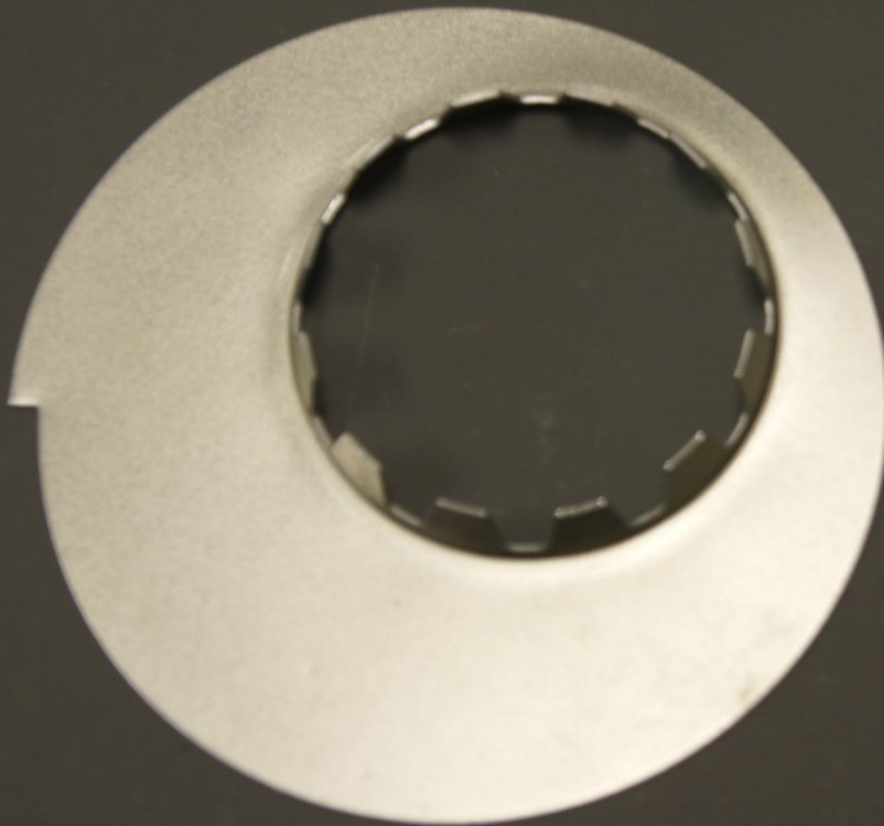
P-769-2DP | GM

5/8Bore | Box Qty 4000 | 4.8L, 5.3L, 5/7L, 6.0L; Escalade 02-03; Corvette 97-03; Avalanche-02-03; Silverado-93-03; Siera 99-03; Yukon-00-03

[Back to Matrix](#)



P-769-2DP
5/8 Bore
Box Qty.-4000
General Motors
4.8L,5.3L,5/7L,6.0L
Escalade 02-03
Camaro98-02
Corvette 97-03
Avalanche-02-03
GMC1500-3500-03
Silverado-93-03
Siera 99-03
Suburban
Denali
Yukon-00-03



P-773-2G
General Motors
Belt Guard
Skylark,Firenza
Camaro Firebird
Lemans
1982-1994

P-697-20 | Nissan-Isuzu

Thermo-King | 4 Cyl. engine

[Back to Matrix](#)



P-697-20
4 Cyl. engine
Thermo-King
Isuzu engine

P-747-2 | Nissan-Isuzu

5/8 Bore | 2-5/16 O.D; Vane; Ht. 31/64

[Back to Matrix](#)



P-747-2
5/8 Bore
2-5/16 O.D.
Vane Ht. 31/64

P-770-2 | Nissan-Isuzu

12 MM Bore | Box Qty 3500 | 4 cyl. 1.6L; Sentra 91-2000; 200 SX-95-98

[Back to Matrix](#)



P-770-2
Box Qty.-3500
12 MM Bore
Nissan
4 cyl. 1.6L
Sentra 91-2000
200 SX-95-98

P-771-2 | Nissan-Isuzu

12 MM Bore | Box Qty 3500 | 4 Cyl. 2.4l; 240SX 89-91; Frontier 98-04; 2000-2004

[Back to Matrix](#)



P-771-2
12 MM Bore
Box Qty.-3500
Nissan
4 Cyl. 2.4L
240SX 89-91
Frontier 98-04
Xterra 2000-2004

P-772-2 | Nissan-Isuzu

12 MM Bore | Box Qty 3500 | 1.5l, 1.6L; 1982-1989

[Back to Matrix](#)



P-772-2
Box Qty.-3500
12 MM Bore
Nissan/Datsun
1.5l,1.6L
1982-1989